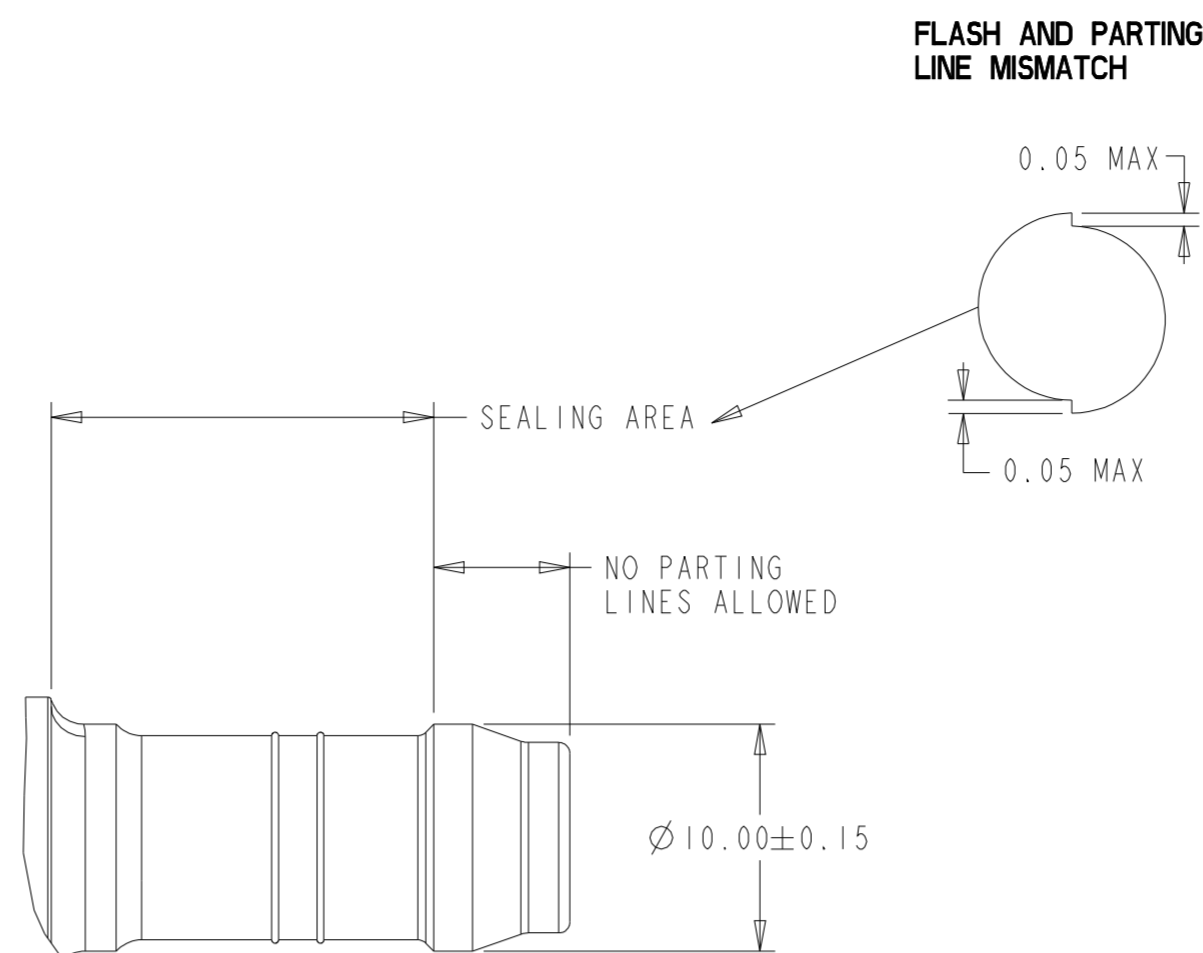
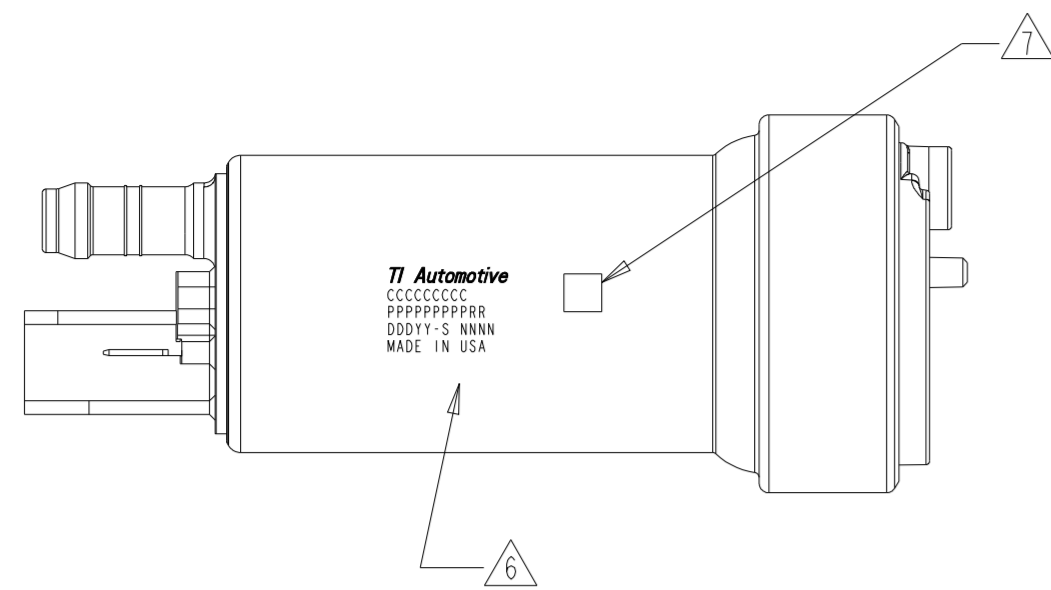
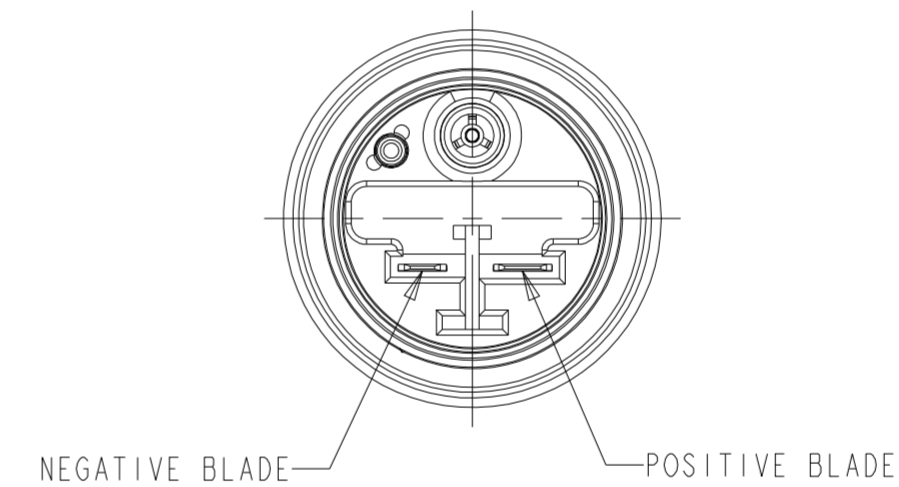
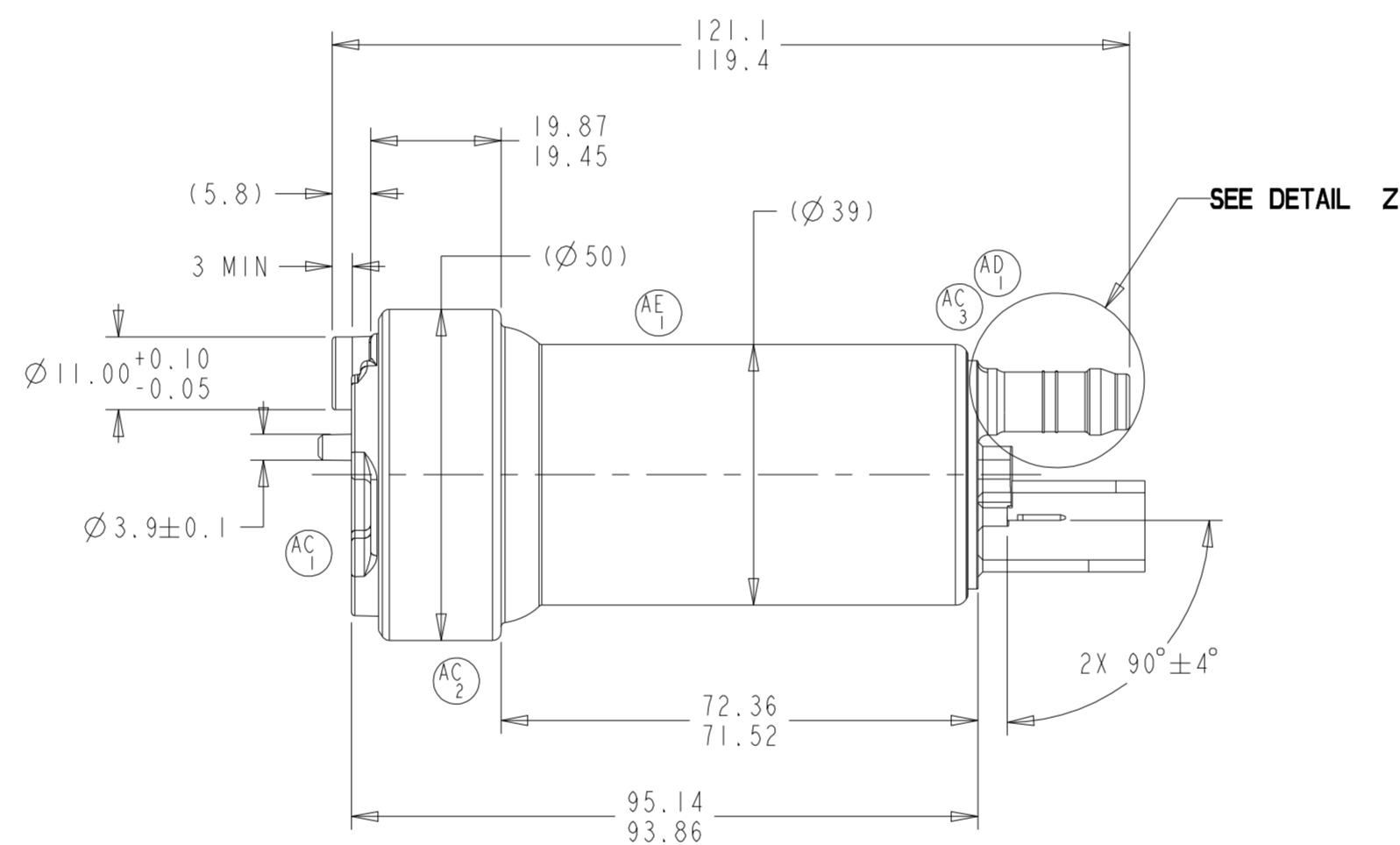
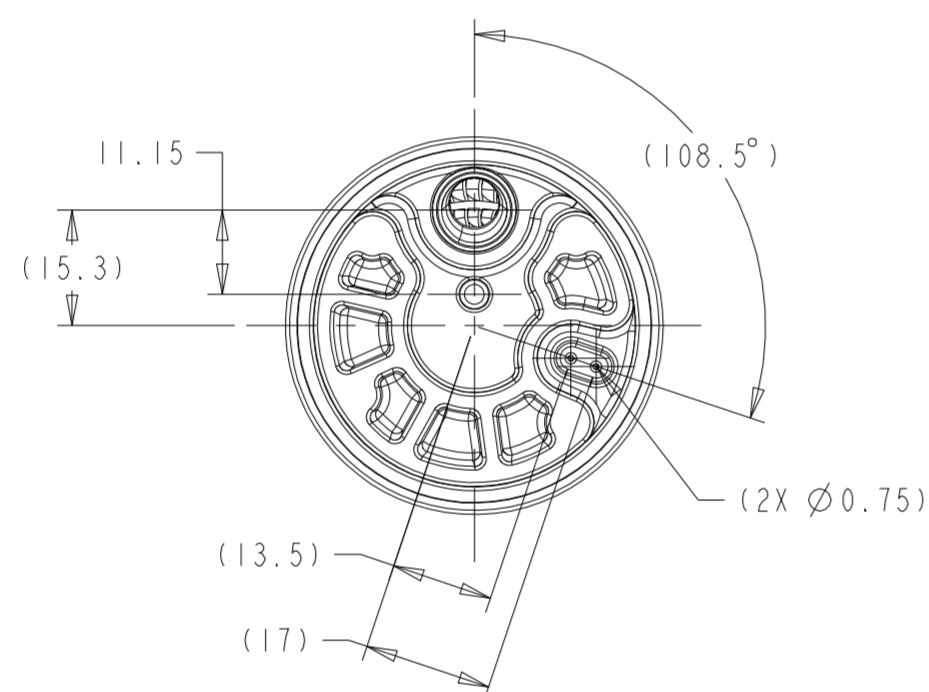
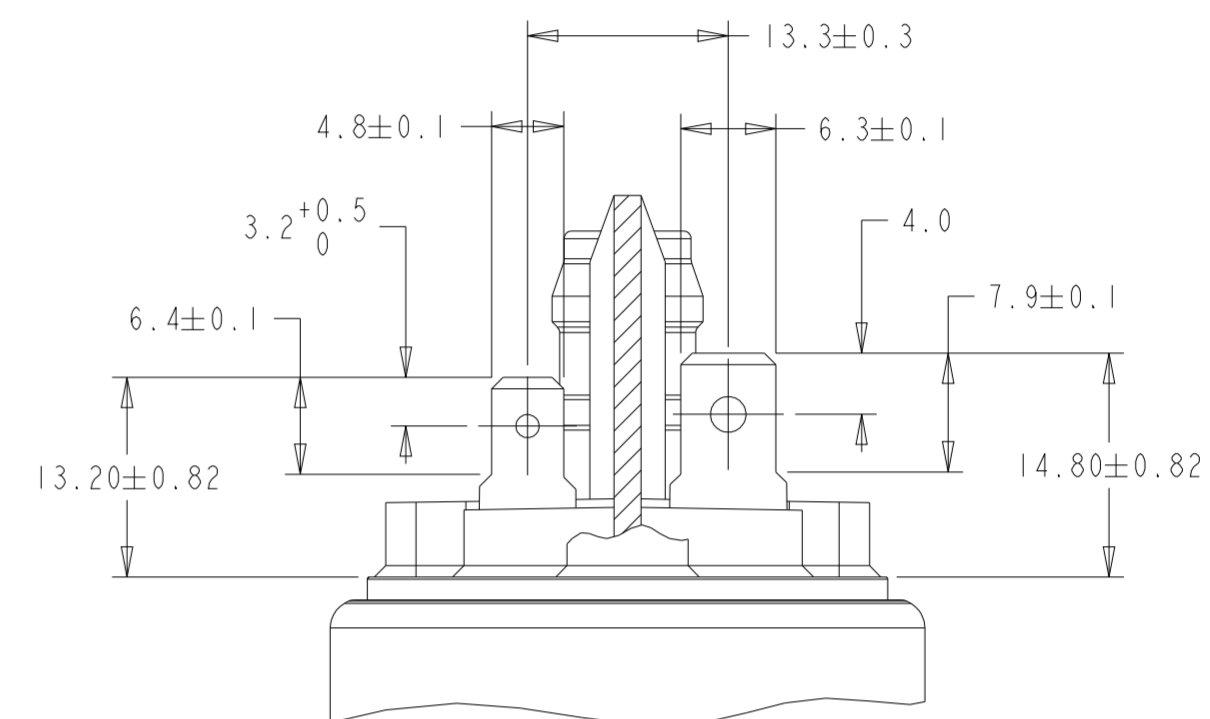


REVISIONS						
ZONE	LTR	DESCRIPTION	CHANGE No	DATE	BY	APPR'D
	AA	INITIAL RELEASE	C2646	14AUG14	RMB	BLM
	AB	ABI UPDATED AND ADDED ETCHING INFORMATION VIEWS	DR53230	06JUL15	SLK	BLM
---	7-D	AC1 REMOVED AB REVISIONS				
	7-D	AC2 100106777 INLET COVER WAS 0213772				
	7-D	AC3 000115439 UPPER CAP WAS 0250600	C10023 DR74778	11APR19	SLK	BJG
	6-E	AC4 000106742 CHECK VALVE WAS 1760594				
	6-E	AD1 1760594 CHECK VALVE WAS 000106742	82487	23SEP21	SLK	TLH
	7-E	AE1 DBTC0031 MAGNETS WERE 184-31	83636	07MAR23	JTK	MLM



DETAIL Z
SCALE 3:1



PUMP PERFORMANCE							
	VOLTAGE		PRESSURE		MIN FLOW RATE		MAX CURRENT
	VDC	KPA	PSI (REF)	LPH	GPH (REF)	AMPS	
RUNNING							
RUNNING	13.5	345	50	309	81.6	16.63	
SHUT OFF	12.0	925-1350	134-196	0	0	23	

NOTES:

- PUMP WILL BE PACKAGED TO PREVENT CONTAMINATION BY FOREIGN MATERIAL
- TERMINAL BLADES DESIGNED TO SAE J858 TYPE 1B, WITH AN EXCEPTION TO DIM G (THICKNESS IS 0.81 NOT 0.50) FOR THE NEGATIVE TERMINAL
- MODEL DCSS 39/50, NON-FFV PUMP
- PUMP TO BE EVACUATED OF TEST FLUID PRIOR TO INSTALLATION OF SHIPPING CAPS
- MINIMUM RECOMMENDED WIRE GAGE: 12

⚠ LASER ETCH INFO:
 TI AUTOMOTIVE
 CCCCCCCC = CUSTOMER PART NUMBER (IF REQUIRED)
 PFFFFFFF = TI AUTOMOTIVE PART NUMBER, RR = TI AUTOMOTIVE PART REV
 DDD = JULIAN DATE, YY = YEAR, S = SHIFT, NNNN = SERIAL NUMBER
 MADE IN USA

⚠ DATA MATRIX CODE = PART NUMBER, JULIAN DATE-SHIFT-SERIAL NUMBER
 (EX: 000112499X22514-1-0123)

KEY PRODUCT CHARACTERISTICS			
REFER TO TI AUTOMOTIVE GLOBAL ADVANCED QUALITY PLANNING DOCUMENT CW-4-ALL-411 FOR THE CLASSIFICATION AND CONTROL OF KEY PRODUCT CHARACTERISTICS			
TYPE OF CHARACTERISTIC	SAFETY	REGULATORY	FUNCTION / FUNCTION PROCESS
NUMBER PER EACH CHARACTERISTIC	0	0	0
TOTAL NUMBER OF CHARACTERISTICS	0	0	0

THIS DRAWING IS PROPERTY OF TI AUTOMOTIVE. TI AUTOMOTIVE CLAIMS PROPRIETARY RIGHTS IN THE SUBJECT MATTER SHOWN AND DESCRIBED ON THIS DRAWING AND RETAINS ALL INTELLECTUAL PROPERTY RIGHTS. THE DRAWING IS PROVIDED FOR REFERENCE PURPOSES ONLY AND ON THE EXPRESS CONDITION THAT IT WILL BE HELD IN CONFIDENCE. THIS DRAWING SHALL NOT BE DISCLOSED TO OTHERS OR USED FOR THE PURPOSE OF MANUFACTURE OR PROCUREMENT FROM OTHERS OF THE ARTICLE OR PART SHOWN WITHOUT TI AUTOMOTIVE'S EXPRESS WRITTEN CONSENT. NO LICENSE OR OTHER RIGHT IS GIVEN OR IMPLIED BY THE PROVISION OF THIS DRAWING TO RECEIPT.
 COPYRIGHT, TI AUTOMOTIVE 2018, ALL RIGHTS RESERVED.

METRIC			
ALL DIMENSIONS ARE IN MILLIMETERS			
DO NOT SCALE			
DECIMAL TOLERANCES UNLESS OTHERWISE SPECIFIED ONE PLACE ±0.25 TWO PLACE ±0.13 ANGLES ±1°			
THIRD ANGLE PROJECTION			
DIMENSIONS IN ACCORDANCE WITH ASME Y14.5 - 2009			
		630 COLUMBIA ST. CARO, MI 48723 +1 989.673.7727	
		ENGINEER: B.MIDDLETON	26JUN2014
DESIGNER: R.BRUBAKER	26JUN2014		
CAD SYSTEM: PRO/E	SCALE: 1:1	SHEET NO. 1 OF 1	
REFERENCE ID/REV.: F90000273, HJPB9273AG	3D PLM REFERENCE/REV.: AR0037452/AE		
REFERENCE ID/REV.: 000112499/AG	3D PLM REFERENCE/REV.: AR0037450/AE		
DRAWING NAME: FUEL PUMP OUTLINE			
SIZE: A1	DRAWING NUMBER: 000112499		