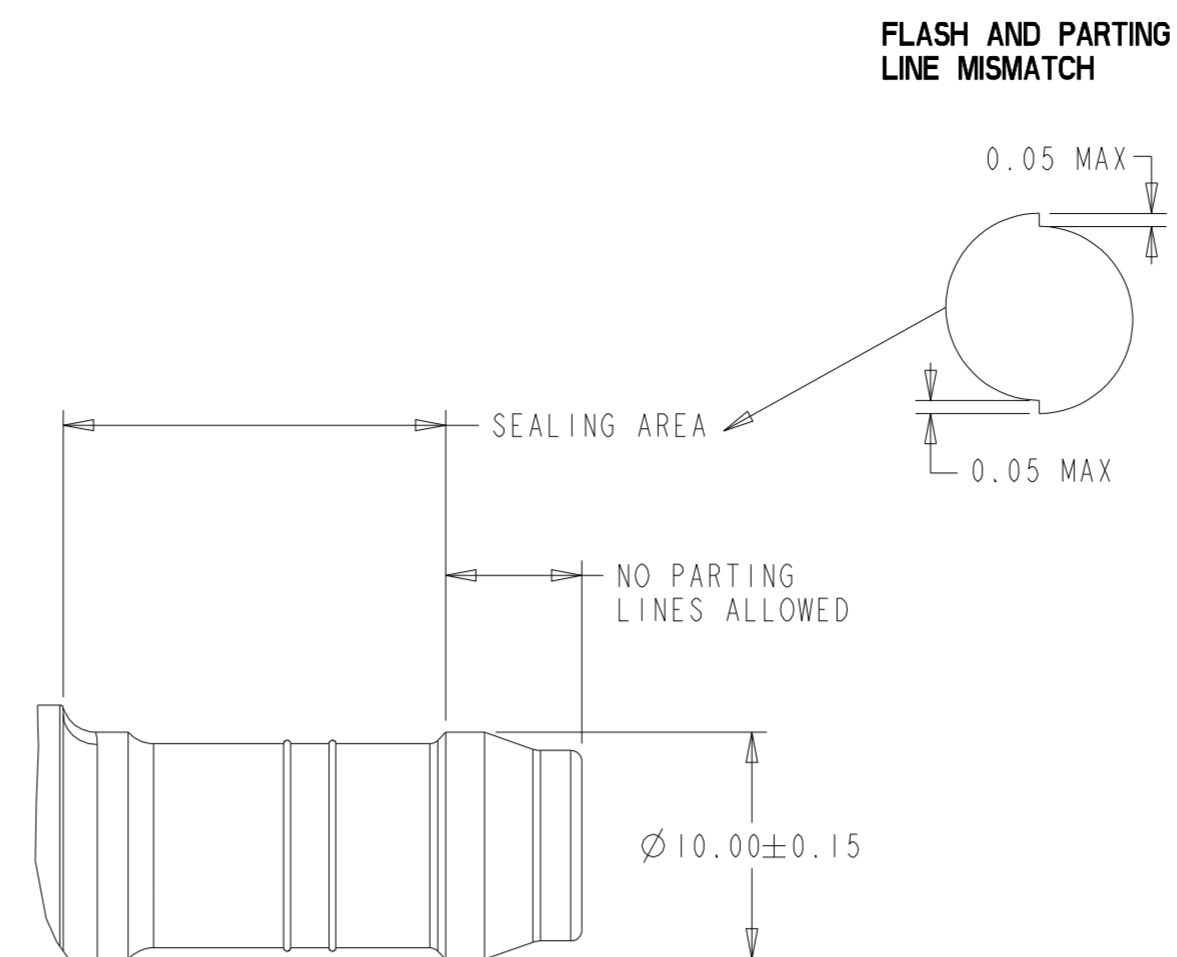
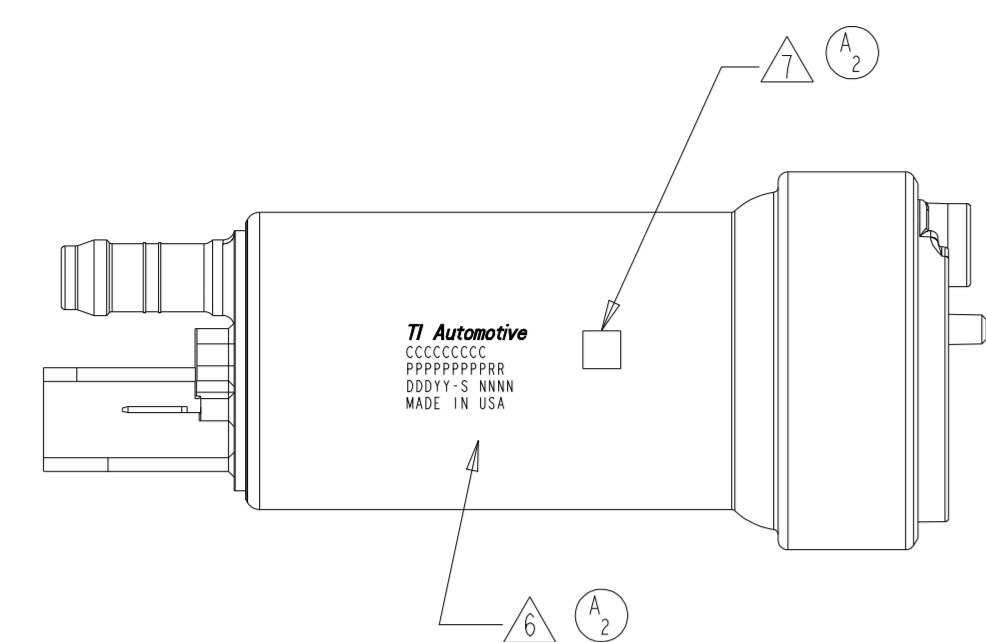
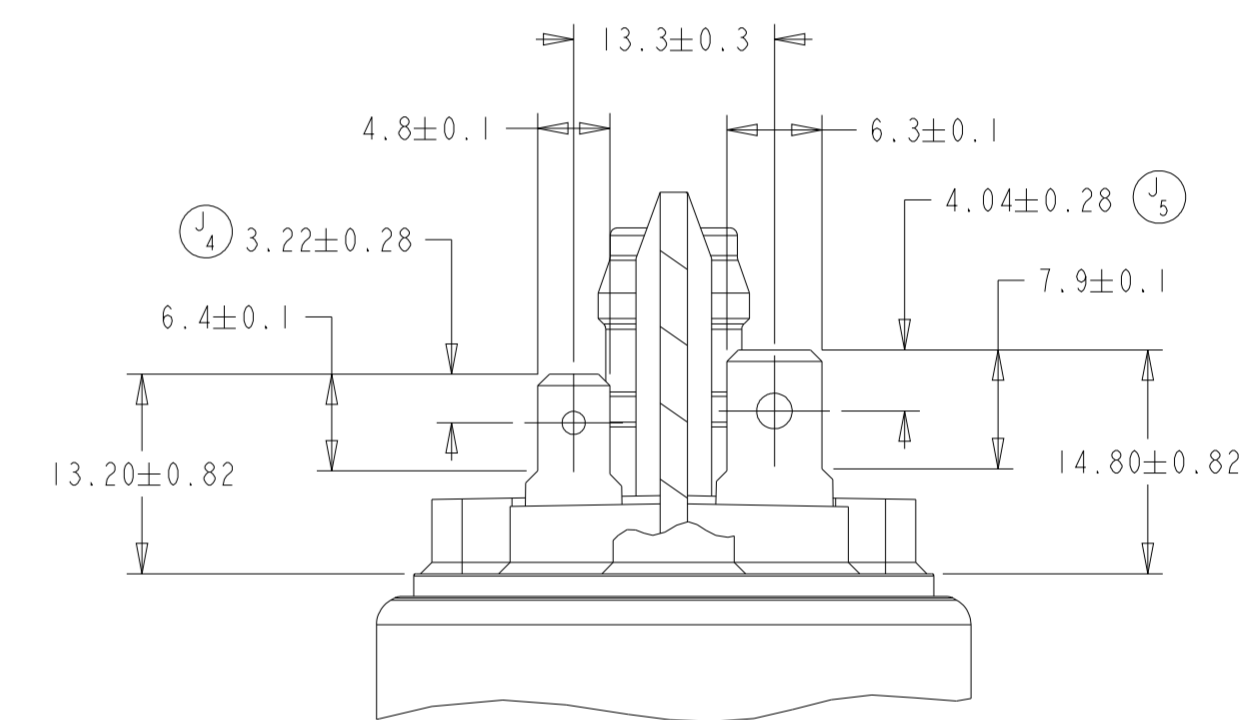
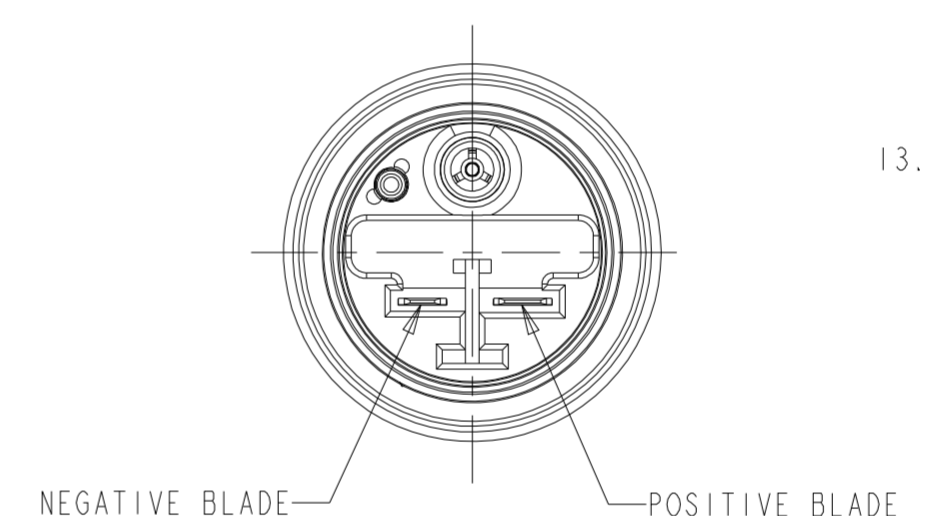
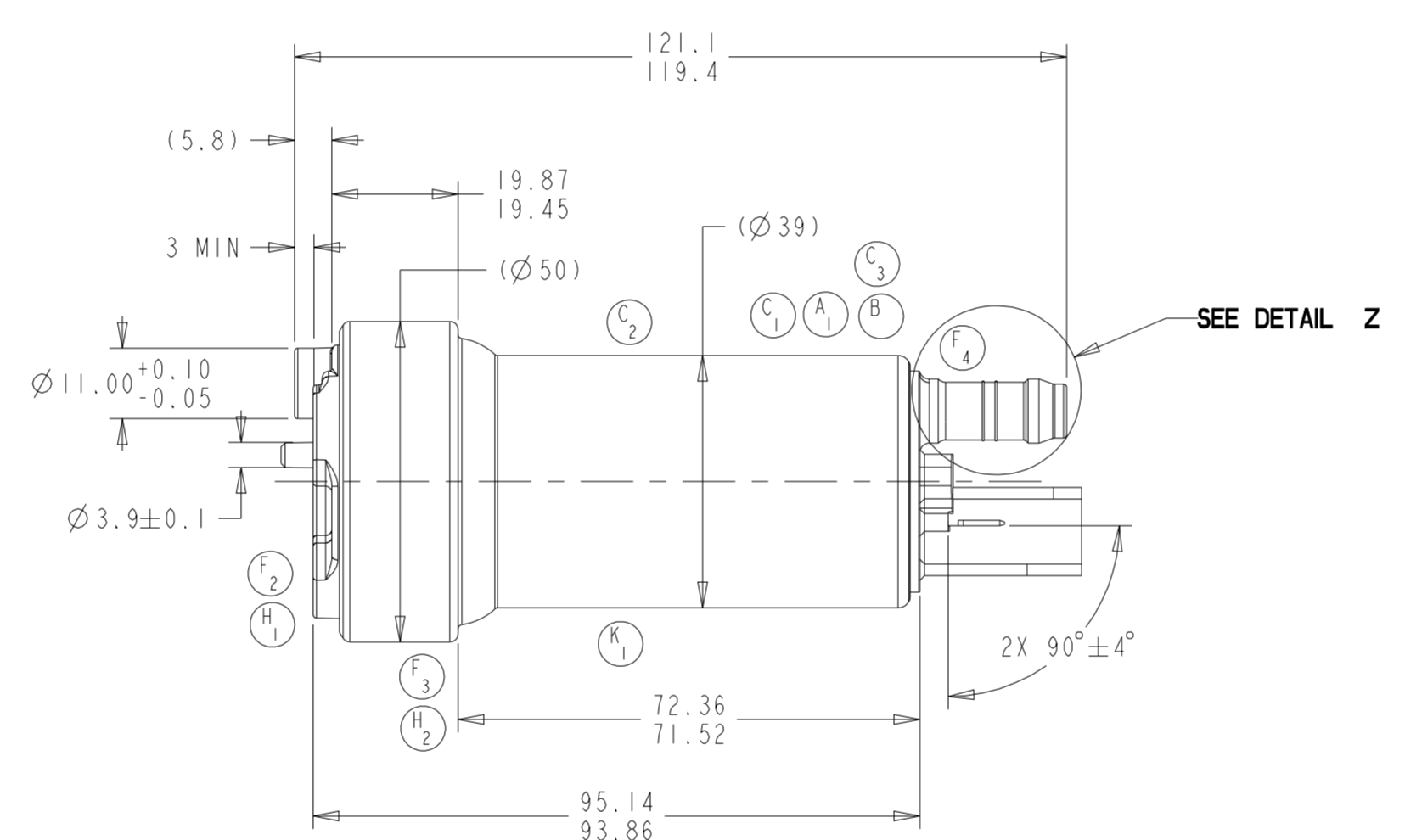
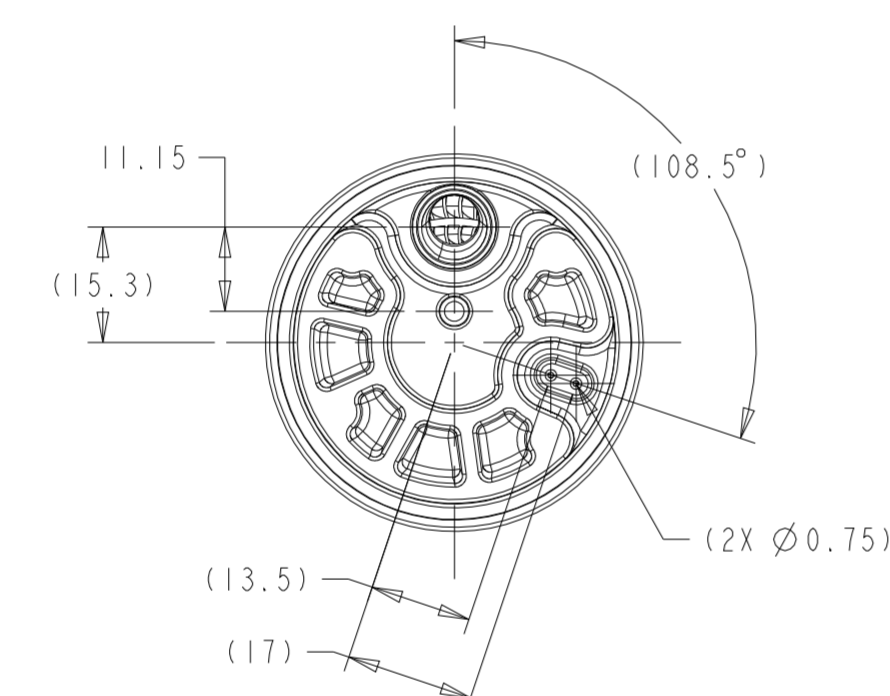


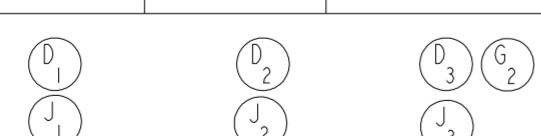
REVISIONS						
ZONE	LTR	DESCRIPTION	CHANGE No	DATE	BY	APPR'D
	REL	REL FOR PROD	C312	16SEP10	DRG	BM
6-D	A1	000000411 BRUSHES WERE 1870654	C1043	10OCT11	DRG	BJG
---	A2	ADDED NOTES 6 & 7				
6-D	B	000101654 BRUSHES WERE 000000411	C1179	23FEB12	DRG	BJG
6-D	C1	000103941 BRUSHES WERE 000101654				
7-D	C2	000101527 ARMATURE WAS 1595703	C1750	27NOV12	DRG	BJG
6-E	C3	000103760 SPRING WAS 0983266				
10-B	D1	309 WAS 270				
9-B	D2	81.6 WAS 71.3	C1010	21JUN13	DRG	BJG
9-B	D3	16.63 WAS 14				
	E1	UPDATED AND ADDED ETCHING INFORMATION VIEWS	DR53230	06JUL15	SLK	BLM
---	F1	REMOVED E REVISIONS				
7-D	F2	100106777 INLET COVER WAS 0213772				
7-D	F3	000115437 UPPER CAP WAS 0250600	C10023 DR74774	27MAR19	SLK	BJG
6-D	F4	000106742 CHECK VALVE WAS 1760594				
---	G1	REVERSED CHANGES F3 THRU F4	82046	22JUN20	SLK	TLH
9-B	G2	25 AMPS WAS 18 AMPS				
8-D	H1	100106777 INLET COVER WAS 0213772	82578	24AUG21	SLK	TLH
7-D	H2	000115437 UPPER CAP WAS 0250600				
*** LETTER "I" NOT USED ***						
10-B	J1	340 WAS 309				
9-B	J2	90 WAS 8.6				
9-B	J3	17 WAS 16.63	82650	31AUG21	SLK	TLH
3-E	J4	3.22±0.28 WAS 3.2 +0.5/-0				
1-E	J5	4.04±0.28 WAS 4.0±0.25				
7-D	K1	DBTC0031 MAGNETS WERE 184-31	83636	03MAR23	JTK	MLM



DETAIL Z
SCALE 3:1



PUMP PERFORMANCE							
	VOLTAGE		PRESSURE		MIN FLOW RATE		MAX CURRENT
	VDC	KPA	PSI (REF)	LPH	GPH (REF)	AMPS	
RUNNING							
RUNNING	13.5	345	50	340	90	17	
SHUT OFF	12.0	650-1000	94-145	0	0	25	



- NOTES:
- PUMP WILL BE PACKAGED TO PREVENT CONTAMINATION BY FOREIGN MATERIAL
 - TERMINAL BLADES DESIGNED TO SAE J858 TYPE 1B, WITH AN EXCEPTION TO DIM G (THICKNESS IS 0.81 NOT 0.50) FOR THE NEGATIVE TERMINAL
 - MODEL DCSS 39/50, NON-FFV PUMP
 - PUMP TO BE EVACUATED OF TEST FLUID PRIOR TO INSTALLATION OF SHIPPING CAPS
 - MINIMUM RECOMMENDED WIRE GAGE: 12
- ⚠ LASER ETCH INFO:
 TI AUTOMOTIVE
 CCCCCCCC = CUSTOMER PART NUMBER (IF REQUIRED)
 PPPPPPPP = TI AUTOMOTIVE PART NUMBER, RR = TI AUTOMOTIVE PART REV
 DDD = JULIAN DATE, YY = YEAR, S = SHIFT, NNNN = SERIAL NUMBER
 MADE IN USA
- ⚠ DATA MATRIX CODE = PART NUMBER, JULIAN DATE-SHIFT-SERIAL NUMBER
 (EX: 000101488XX-1-2222)

KEY PRODUCT CHARACTERISTICS			
REFER TO TI AUTOMOTIVE GLOBAL ADVANCED QUALITY PLANNING DOCUMENT CW-4-ALL-411 FOR THE CLASSIFICATION AND CONTROL OF KEY PRODUCT CHARACTERISTICS			
TYPE OF CHARACTERISTIC	SAFETY	REGULATORY	FUNCTION / FUNCTION PROCESS
	⊙	⊙	⊙
NUMBER PER EACH CHARACTERISTIC	1	1	1
TOTAL NUMBER OF CHARACTERISTICS	1	1	1

METRIC
ALL DIMENSIONS ARE IN MILLIMETERS

DO NOT SCALE
DECIMAL TOLERANCES UNLESS OTHERWISE SPECIFIED
ONE PLACE ±0.25 TWO PLACE ±0.13 ANGLES ±1°

THIRD ANGLE PROJECTION
DIMENSIONS IN ACCORDANCE WITH ASME Y14.5 - 2009

TI Automotive
630 COLUMBIA ST.
CARO, MI 48723
+1 989.673.7727

ENGINEER:	BM	16SEP2010	MATERIAL/SPECIFICATION:
DESIGNER:	DRG	16SEP2010	
CAD SYSTEM: PRO/E	SCALE: 1:1	SHEET NO. OF	
REFERENCE TO REV.:	F90000262, HJPB0015A0	3D PLW REFERENCE REV.:	AR0028853/AK
REFERENCE TO REV.:	000101488/A0	3D PLW REFERENCE REV.:	AR00028854/AJ
DRAWING NAME: FUEL PUMP OUTLINE			
SIZE:	A1	DRAWING NUMBER:	000101488