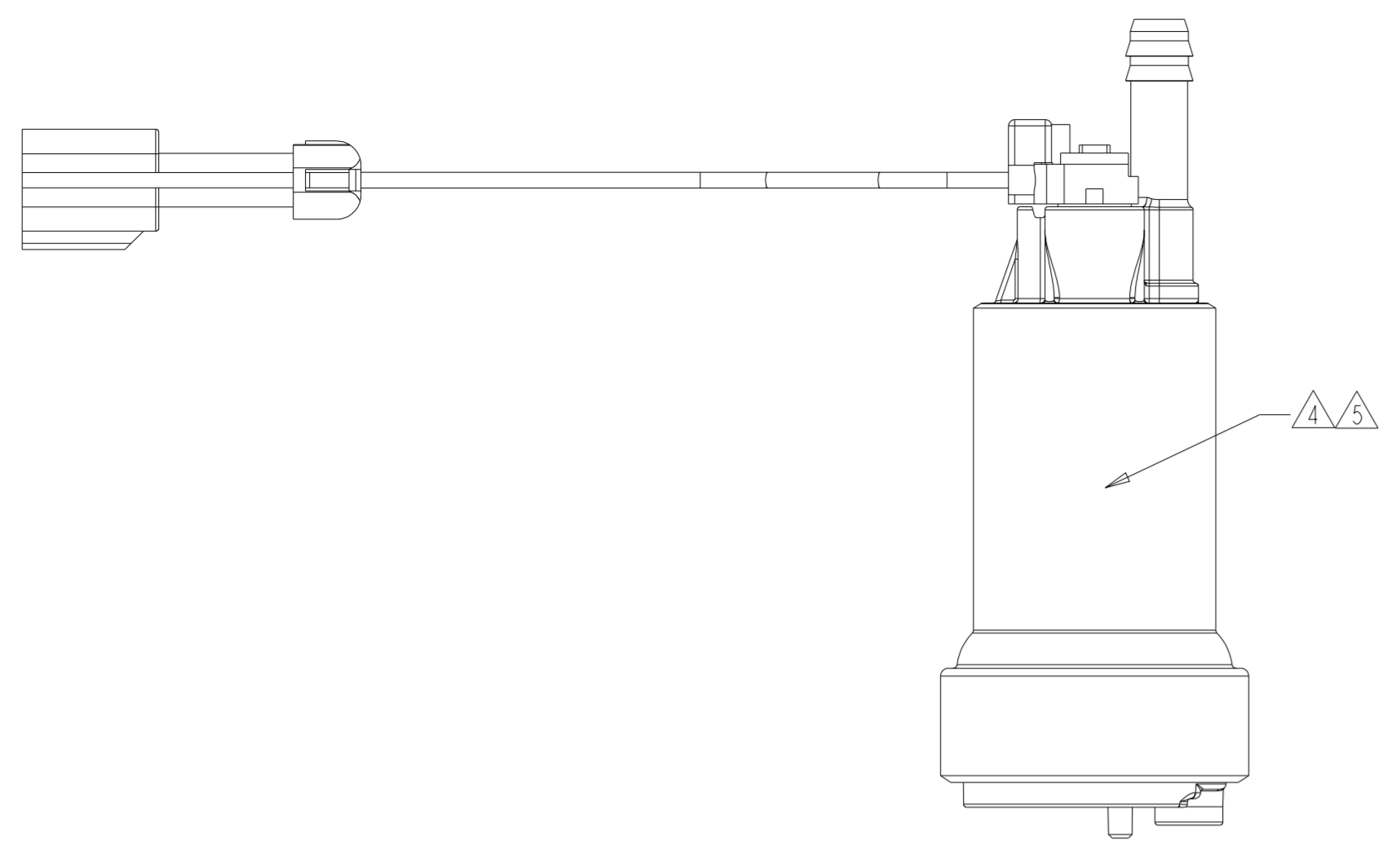
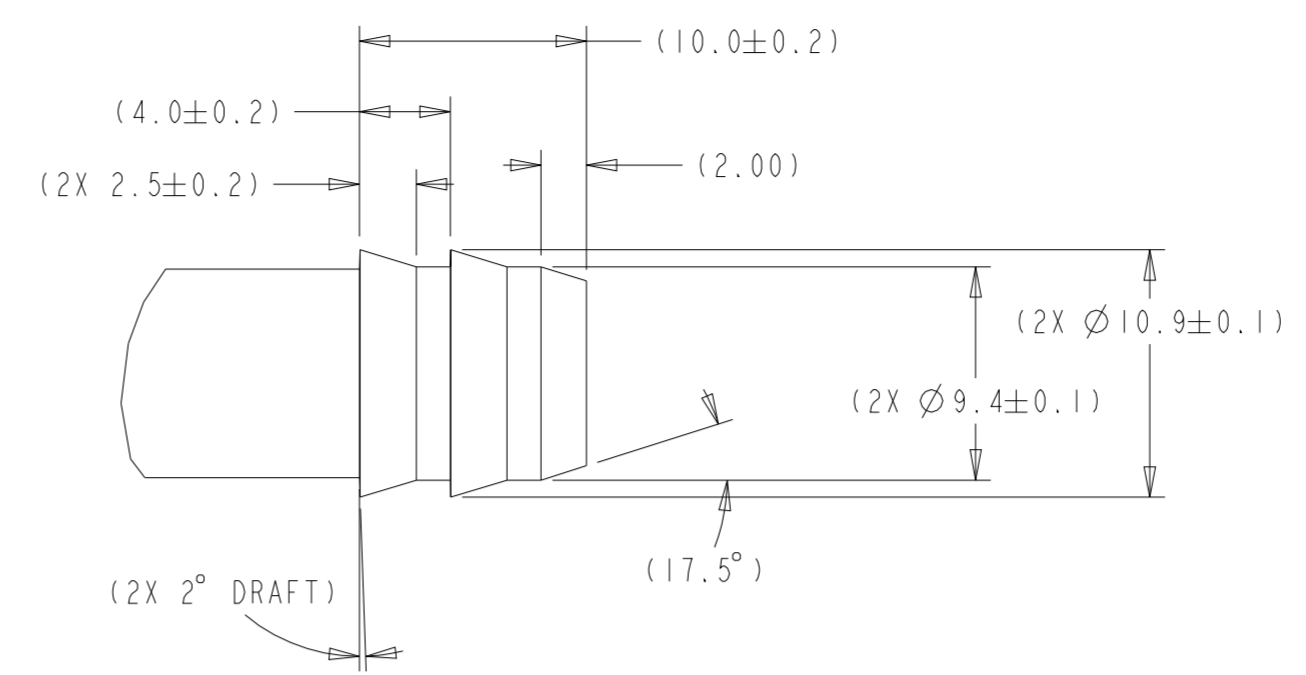


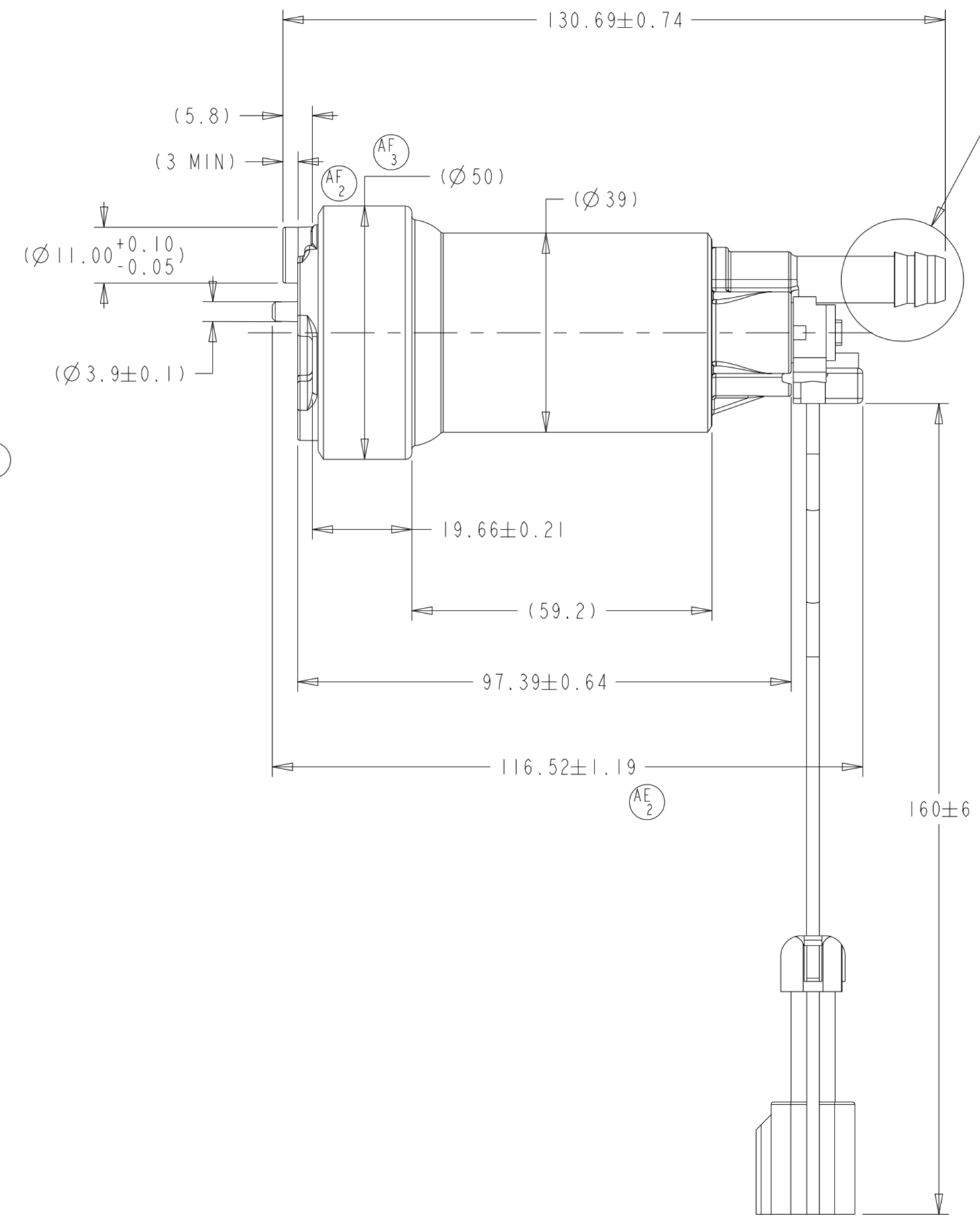
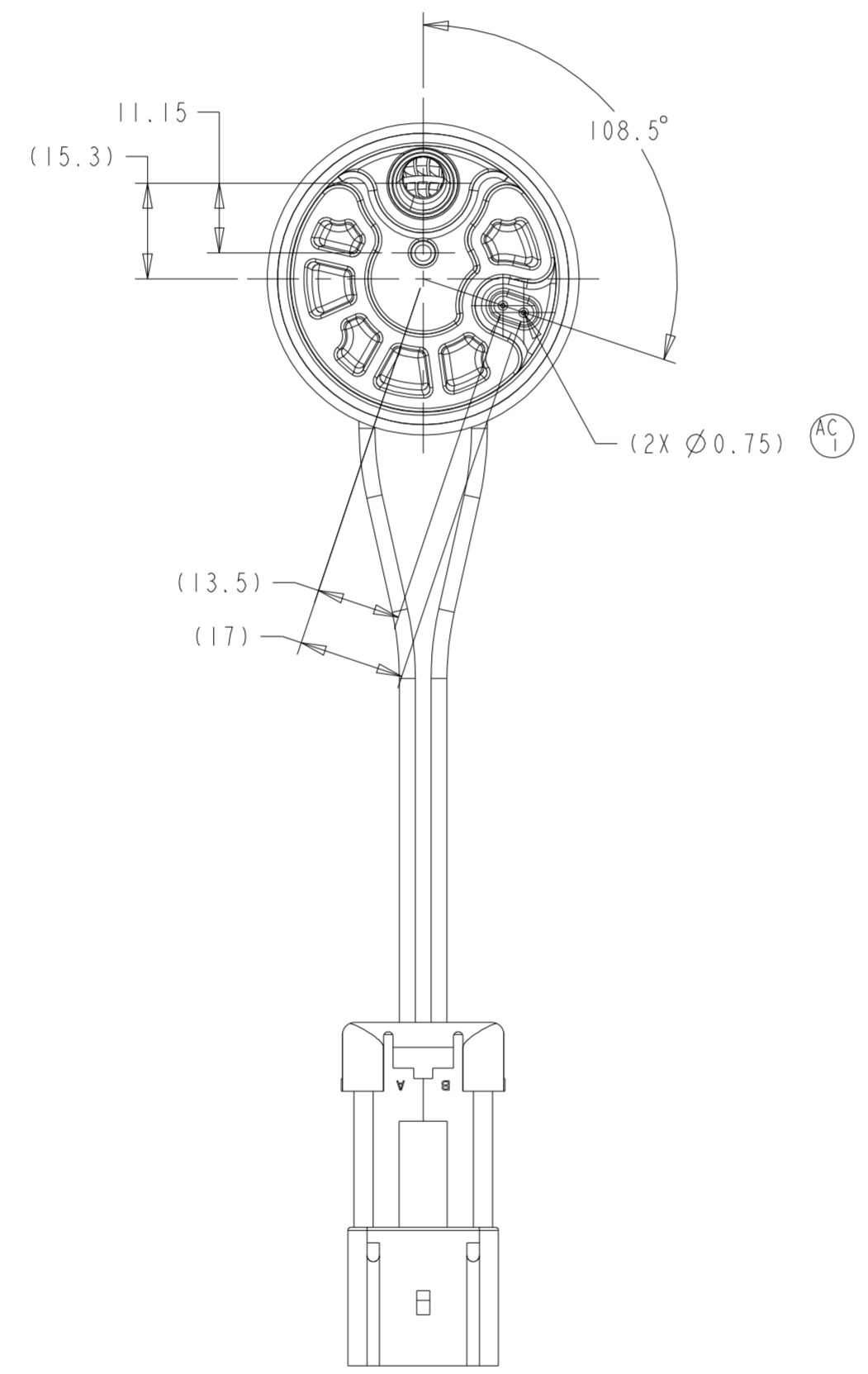
REVISIONS						
ZONE	LTR	DESCRIPTION	CHANGE No	DATE	BY	APPR'D
	AA	INITIAL RELEASE	C'2647	14AUG14	RMB	BLM
12-B 9-B 9-B	AB	AB1, REMOVED 6.8V PROGRAM AB2, WAS 14.5 AB3, WAS 245 LPH AB4, WAS 12V, 925-1350 KPA	DR57448	18APR16	JAK	BLM
5G, 7E 7-B 9-B 9-B 9-F	AC	AC1, CHG DIM'S TO REF AC2, REM NOTES 3, 4 & 7, RE-ORDER NOTE #'S AC3, 228 WAS 232 AC4, 17.1 WAS 15.5 AC5, UPDATED VIEW	DR64059	17AUG17	RMB	TLH
10-B	AD	SHUTOFF 12.0 V WAS 10.0 V	DR64059	22AUG17	RMB	TLH
10-D 6-D	AE	AE1 ADDED ALTERNATE INLET VIEW AE2 ±1.19 WAS ±0.80	81357	30JUL19	SLK	TLH
11-E 6-E	AF	AF1 REMOVED ALTERNATE VIEW AF2 100106777 INLET COVER WAS 0213772 AF3 000115439 UPPER CAP WAS 0250600	82487	23SEP21	SLK	TLH
7-B 7-B	AG	AG1 UPDATED NOTE 4 AG2 ADDED NOTE 5	DR89135	09FEB22	SLK	TLH



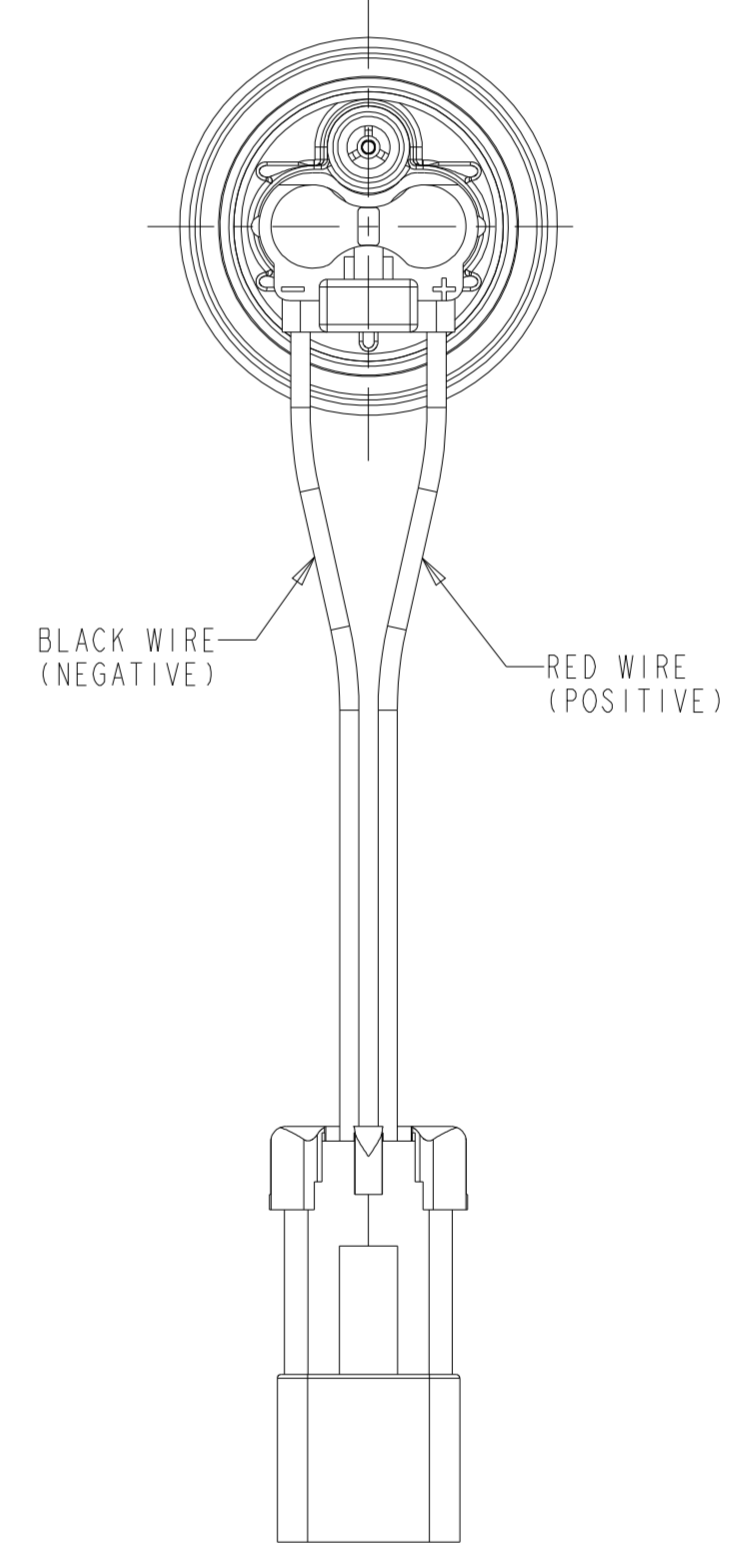
OUTER SHELL INFO
(APPROXIMATE LOCATION)



DETAIL Z
SCALE 3:1



SEE DETAIL Z



PUMP PERFORMANCE SPECIFICATION				
END OF LINE TEST	VOLTS	PRESSURE kPa	LPH (MIN)	AMPS (MAX)
FLOW IN MINERAL SPIRITS	10.6	400.0	228	17.1
SHUTOFF PRESSURE	12.0	850-1175	0.0	23.0

NOTES:

- PUMP WILL BE PACKAGED TO PREVENT CONTAMINATION BY FOREIGN MATERIAL
- MODEL 39/50 CARTRIDGE BRUSH PUMP DIN I RFI
- INLET FILTER REQUIREMENT 31 MICRON

LASTER ETCH INFO:
TI AUTOMOTIVE, FOLLOWED BY:
CCCCCCC = CUSTOMER PART NUMBER (IF REQUIRED)
PPPPPPPP = TI AUTOMOTIVE PART NUMBER, RR = TI AUTOMOTIVE REV (IF REQUIRED)
DDD = JULIAN DATE, YY = YEAR, S = SHIFT, NNNN = SERIAL NUMBER
MADE IN USA

DATA MATRIX CODE = PART NUMBER, JULIAN DATE-SHIFT-SERIAL NUMBER
(EX: 000112500X04022-1-0123)

TYPE OF CHARACTERISTIC	SAFETY	REGULATORY	FUNCTION	FUNCTION PROCESS
NUMBER PER EACH CHARACTERISTIC	0	0	0	0
TOTAL NUMBER OF CHARACTERISTICS	0	0	0	0

THIS DRAWING IS PROPERTY OF TI AUTOMOTIVE. TI AUTOMOTIVE CLAIMS PROPRIETARY RIGHTS IN THE SUBJECT MATTER SHOWN AND DESCRIBED ON THIS DRAWING AND RETAINS ALL INTELLECTUAL PROPERTY RIGHTS. THE DRAWING IS PROVIDED FOR REFERENCE PURPOSES ONLY AND ON THE EXPRESS CONDITION THAT IT WILL BE HELD IN CONFIDENCE. THIS DRAWING SHALL NOT BE DISCLOSED TO OTHERS OR USED FOR THE PURPOSE OF MANUFACTURE OR PROCUREMENT FROM OTHERS OF THE ARTICLE OR PART SHOWN WITHOUT TI AUTOMOTIVE'S EXPRESS WRITTEN CONSENT. NO LICENSE OR OTHER RIGHT IS GIVEN OR IMPLIED BY THE PROVISION OF THIS DRAWING TO RECEIPT. COPYRIGHT, TI AUTOMOTIVE 2018, ALL RIGHTS RESERVED.

METRIC
ALL DIMENSIONS ARE IN MILLIMETERS

DO NOT SCALE
DECIMAL TOLERANCES UNLESS OTHERWISE SPECIFIED
ONE PLACE ±0.25 TWO PLACE ±0.13 ANGLES ±1°

THIRD ANGLE PROJECTION
DIMENSIONS IN ACCORDANCE WITH ASME Y14.5 - 2009

TI Automotive
630 COLUMBIA ST.
CARO, MI 48723
+1 989.673.7727

ENGINEER:	B. MIDDLETON	30JUN2014	MATERIAL/SPECIFICATION:
DESIGNER:	R. BRUBAKER	30JUN2014	
CAD SYSTEM: PRO/E	SCALE: 1:1	SHEET NO. 1 OF 1	
REFERENCE TO/REV.:	F90000274, HJPB9274AAF	3D PLM REFERENCE/REV.:	AR0037455/AG
REFERENCE TO/REV.:	000112500/AE	3D PLM REFERENCE/REV.:	AR0037453/AE
DRAWING NAME: FUEL PUMP OUTLINE			
SIZE:	A1	DRAWING NUMBER:	000112500