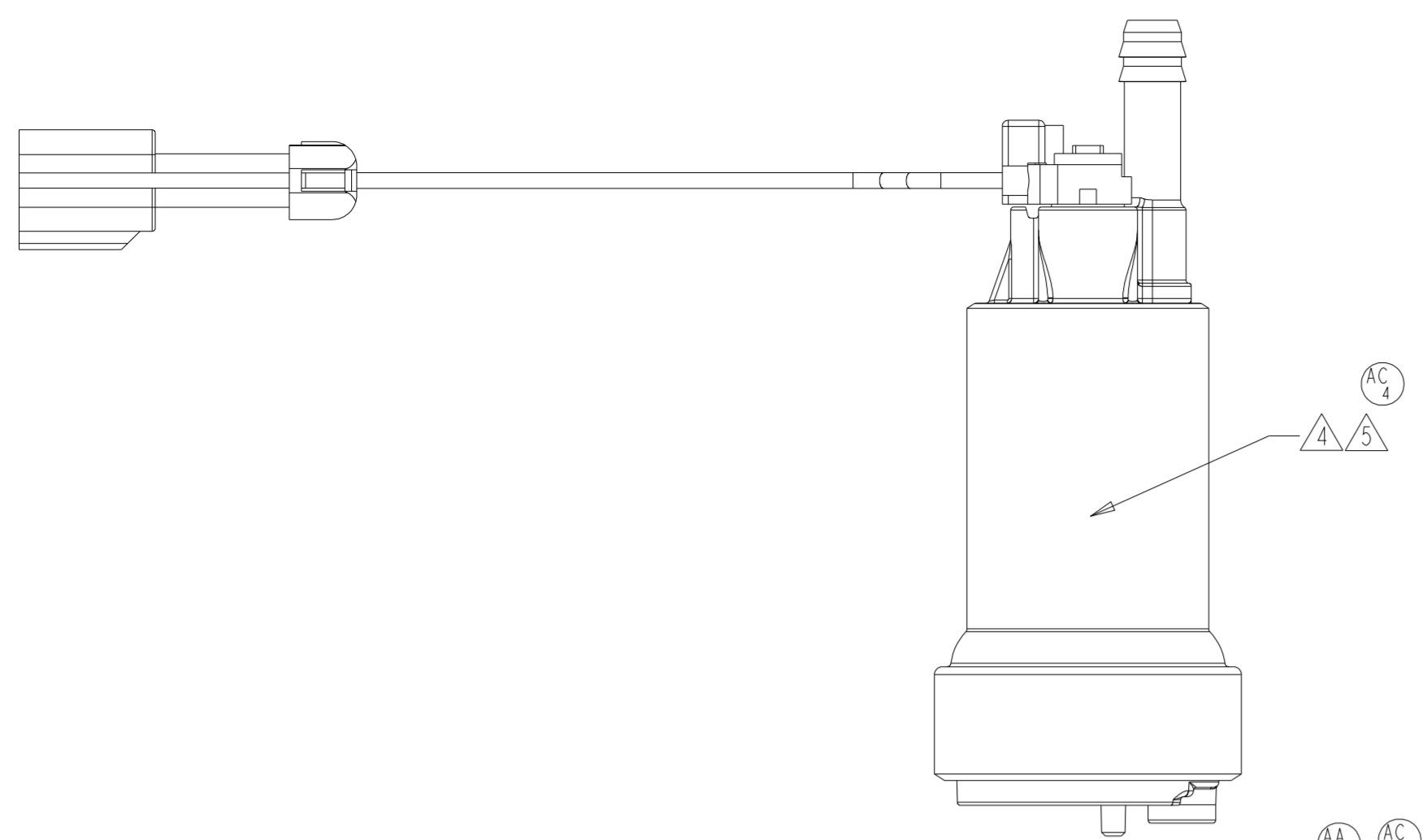
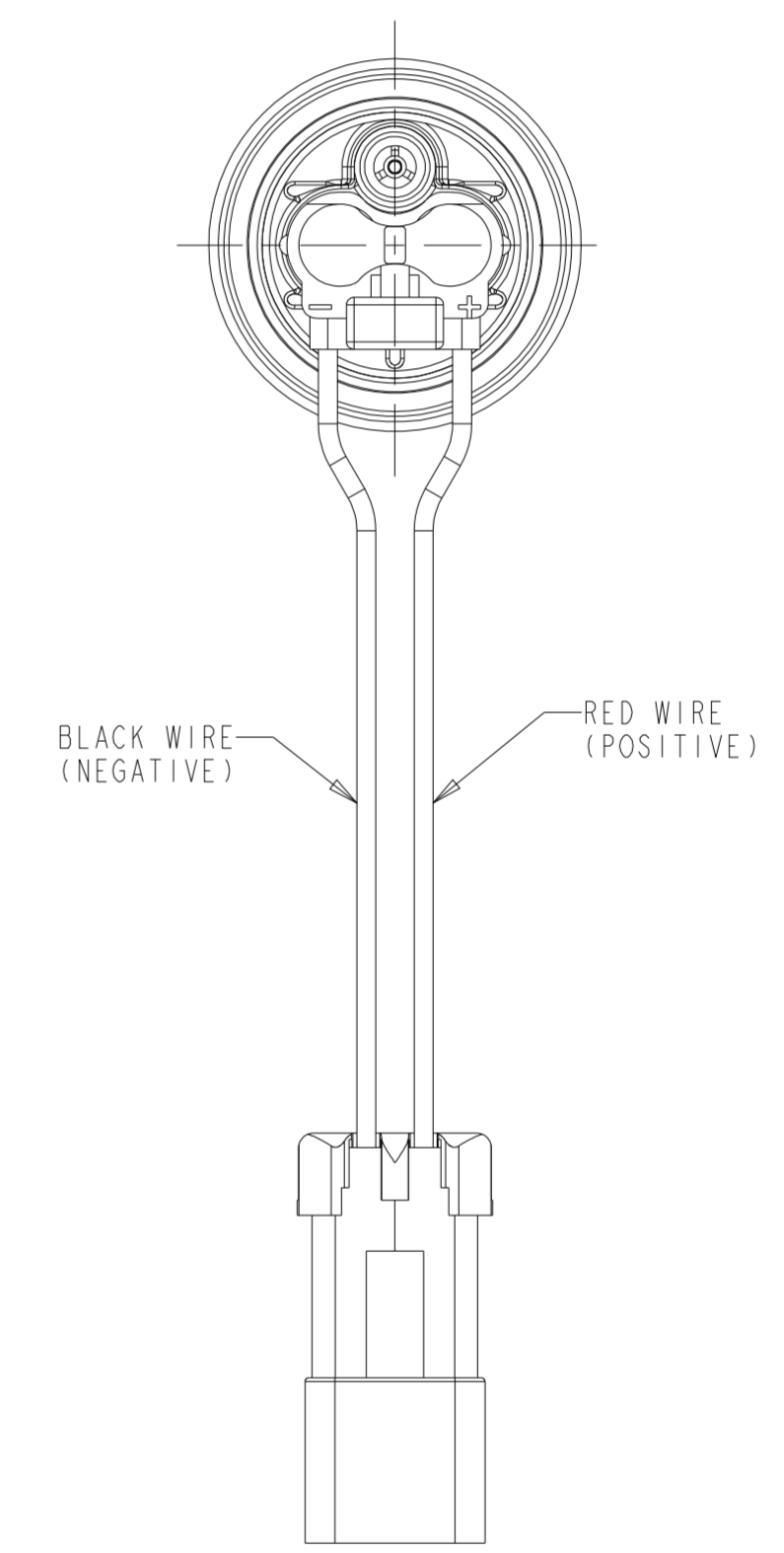
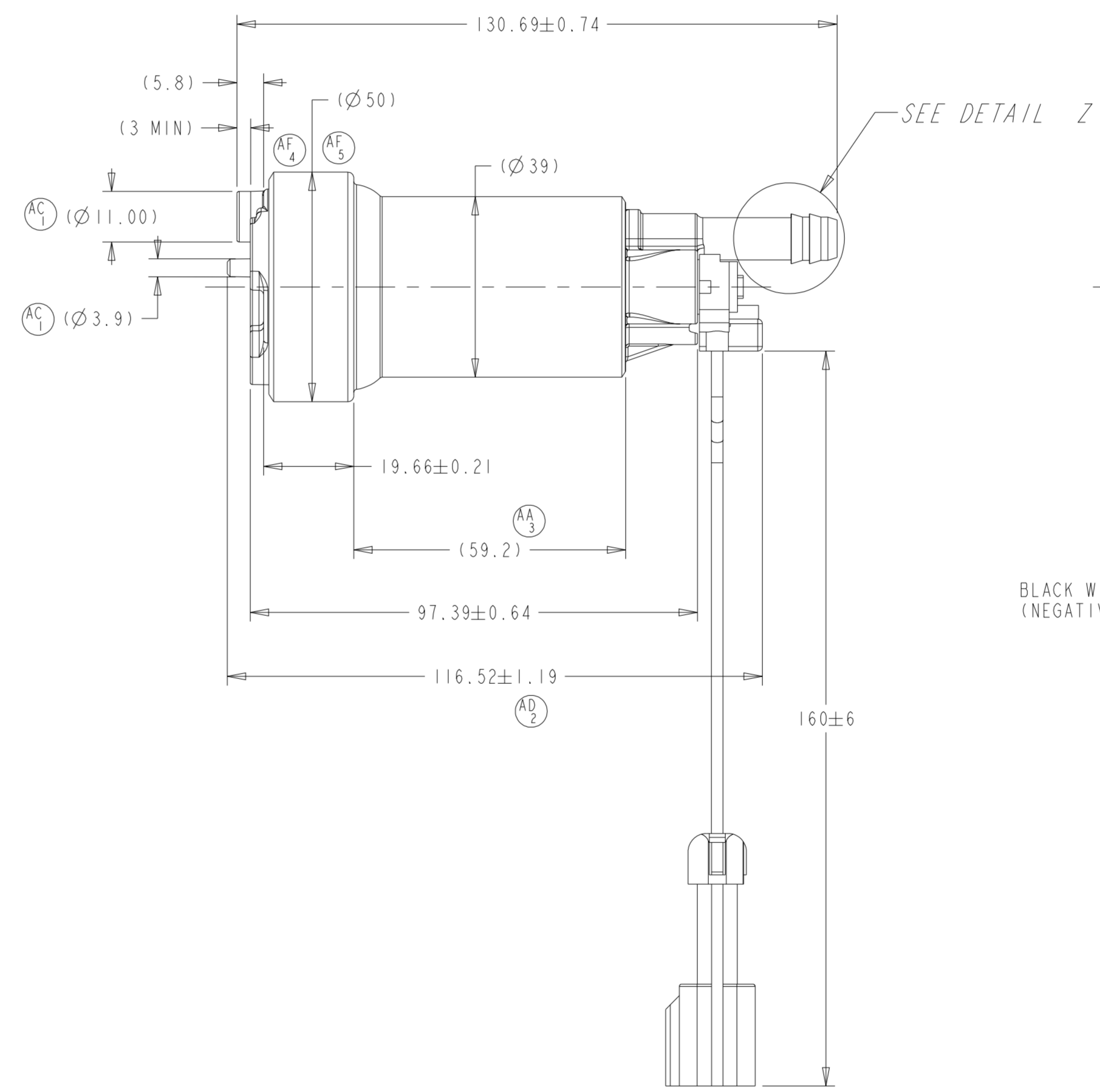
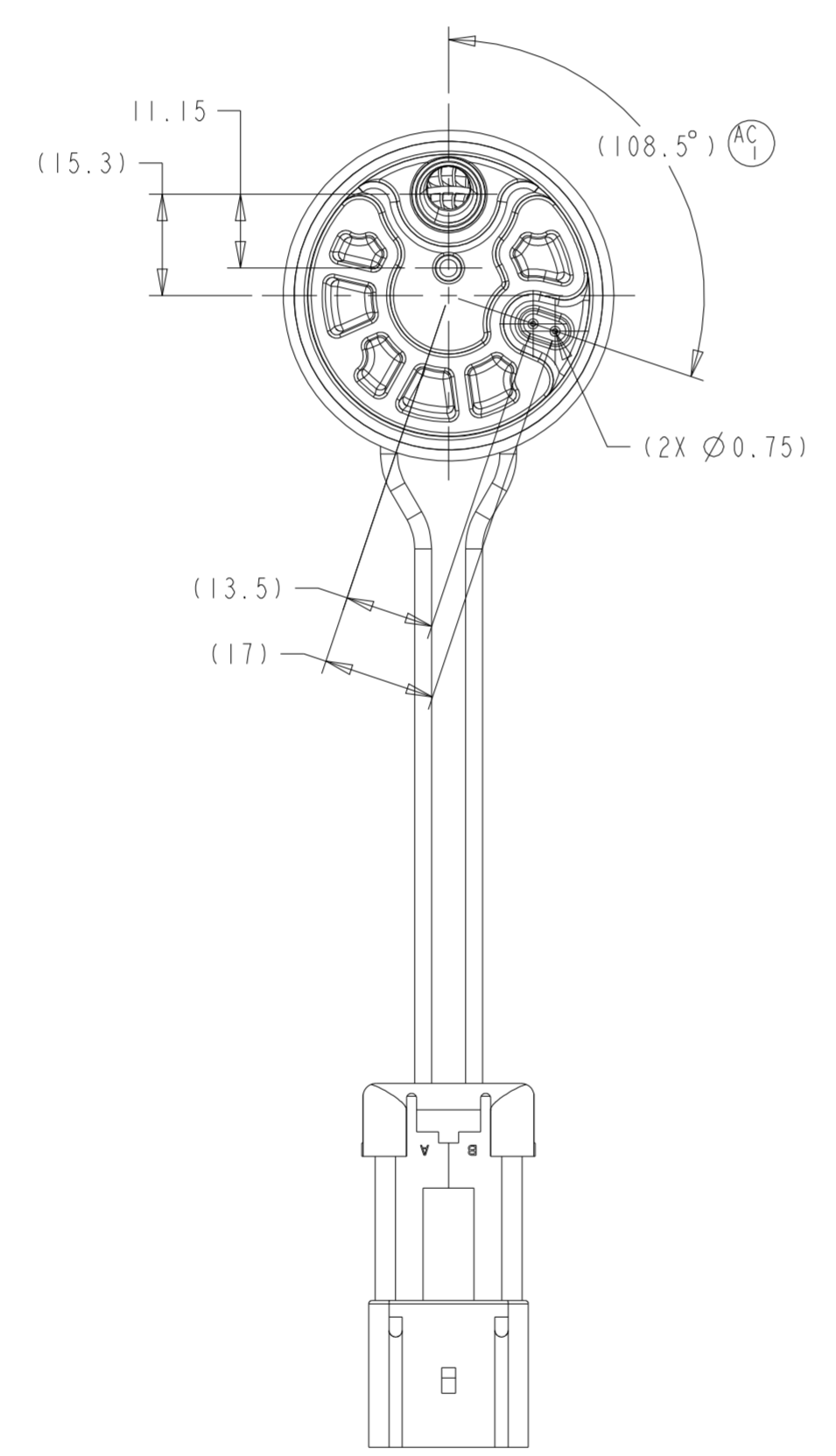
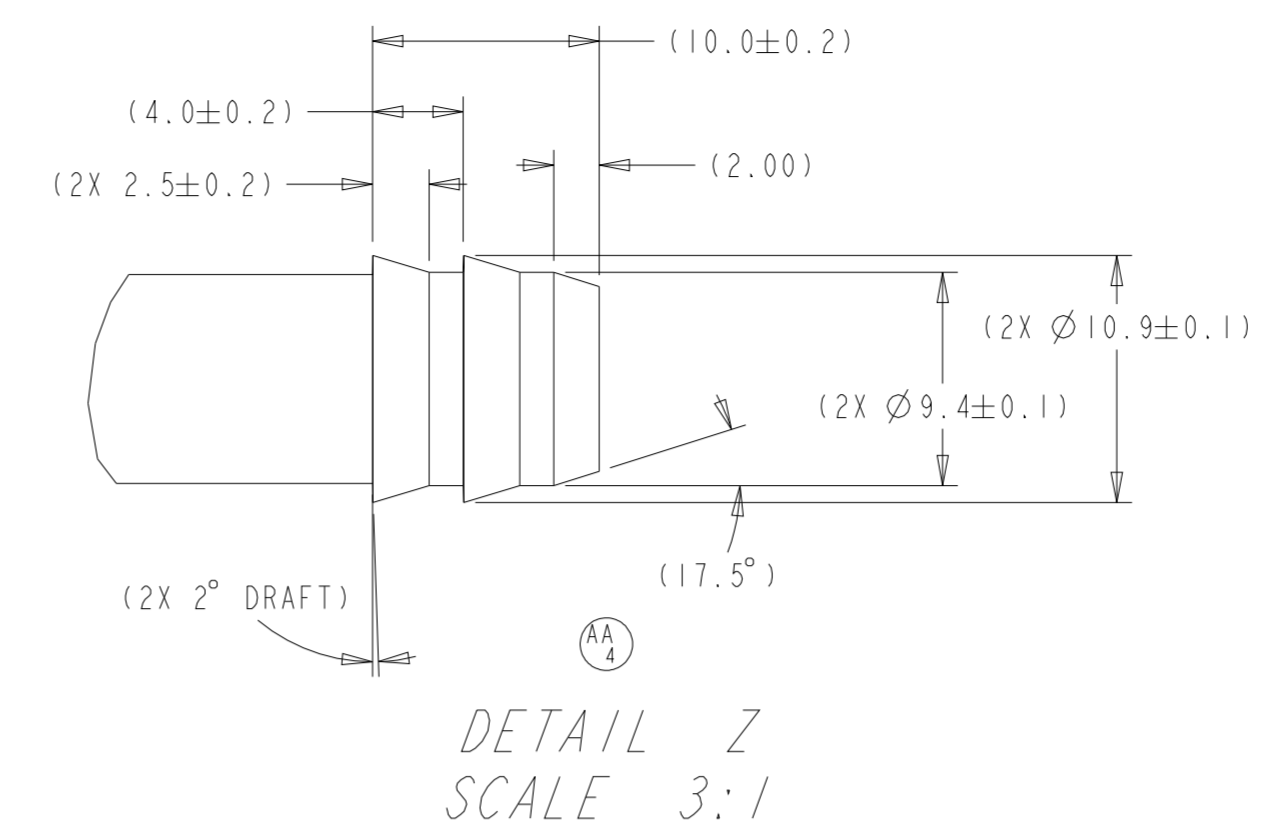


REVISIONS						
ZONE	LTR	DESCRIPTION	CHANGE No	DATE	BY	APPR'D
7B, 10F	REL	REL FOR PROD	C1132	15FEB12	DRG	BLM
7-A	AA	AA1,CHG LASER ETCH TO ROLL STAMP	DR63273 C'4238	02JUN17	RMB	TLH
6-D		AA2.REMOVE NOTE #7(DATA MATRIX)				
5-G		AA3.DIM (59.2) WAS (54.4)				
11-B		AA4.FIT'G DETAIL DIM'S MADE REF				
		AA5.REMOVE 6.8V PERF SPEC				
7-B	AB	REMOVE NOTE 5, RE-ORDER NOTE #'S	C'4291	20JUN17	RMB	TLH
7,8-E		AC1 MADE DIM'S REFERENCE	DR64296 79716	26JUL17	SLK	TLH
8-B		AC2 UPDATED VALUES IN TABLE				
7-B	AC	AC3 REM'D NOTE AND RENUMBERED				
9G, 7B		AC4 UPDATED NOTE 4				
10-F		AC5 UPDATED VIEW				
10-D	AD	AD1 ADDED ALTERNATE INLET VIEW AD2 ±1.19 WAS ±0.80	81357	29JUL19	SLK	TLH
8-B	AE	AE1 228 WAS 240	81513	13AUG19	SLK	TLH
8-B		AE2 17.1 WAS 16.2				
8-B		AF1 UPDATED NOTE 4	DR89134	03FEB22	SLK	TLH
8-B		AF2 ADDED NOTE 5				
11-D	AF	AF3 REM'D ALTERNATE INLET VIEW				
6-E		AF4 10010677 INLET COVER WAS 021372				
6-E		AF5 000115439 UPPER CAP WAS 0250600				



OUTER SHELL INFO
(APPROXIMATE LOCATION)



AF3 AD1

NOTES:

- PUMP WILL BE PACKAGED TO PREVENT CONTAMINATION BY FOREIGN MATERIAL
- MODEL 39/50 CARTRIDGE BRUSH PUMP DIN 1 RFI
- INLET FILTER REQUIREMENT 31 MICRON

LASER ETCH INFO:
TI AUTOMOTIVE
CCCCCCC = CUSTOMER PART NUMBER (IF REQUIRED)
PPPPPPRR = TI AUTOMOTIVE PART NUMBER, RR = TI AUTOMOTIVE REV
DDD = JULIAN DATE, YY = YEAR, S = SHIFT, MADE IN USA

DATA MATRIX CODE = PART NUMBER, JULIAN DATE-SHIFT-SERIAL NUMBER
(EX. 000107670XX-1-2222)

PUMP PERFORMANCE SPECIFICATION					
END OF LINE TEST	VOLTS	PRESSURE kPa	LPH (MIN)	AMPS (MAX)	
FLOW IN MINERAL SPIRITS	10.6	400.0	228	17.1	AE1 AE2
SHUTOFF PRESSURE	12.0	750-950	0.0	23.9	AC2

KEY PRODUCT CHARACTERISTICS			
REFER TO TI AUTOMOTIVE GLOBAL ADVANCED QUALITY PLANNING DOCUMENT CW-4-ALL-411 FOR THE CLASSIFICATION AND CONTROL OF KEY PRODUCT CHARACTERISTICS			
TYPE OF CHARACTERISTIC	SAFETY	REGULATORY	FUNCTION / FUNCTION PROCESS
	Y	Y	Y
NUMBER PER EACH CHARACTERISTIC	1	1	1
TOTAL NUMBER OF CHARACTERISTICS	1	1	1

THIS DRAWING IS PROPERTY OF TI AUTOMOTIVE. TI AUTOMOTIVE CLAIMS PROPRIETARY RIGHTS IN THE SUBJECT MATTER SHOWN AND DESCRIBED ON THIS DRAWING AND RETAINS ALL INTELLECTUAL PROPERTY RIGHTS. THE DRAWING IS PROVIDED FOR REFERENCE PURPOSES ONLY AND ON THE EXPRESS CONDITION THAT IT WILL BE HELD IN CONFIDENCE. THIS DRAWING SHALL NOT BE DISCLOSED TO OTHERS OR USED FOR THE PURPOSE OF MANUFACTURE OR PROCUREMENT FROM OTHERS OF THE ARTICLE OR PART SHOWN WITHOUT TI AUTOMOTIVE'S EXPRESS WRITTEN CONSENT. NO LICENSE OR OTHER RIGHT IS GIVEN OR IMPLIED BY THE PROVISION OF THIS DRAWING TO RECIPIENT.
COPYRIGHT, TI AUTOMOTIVE 2018, ALL RIGHTS RESERVED.

METRIC
ALL DIMENSIONS ARE IN MILLIMETERS

DO NOT SCALE
DECIMAL TOLERANCES UNLESS OTHERWISE SPECIFIED
ONE PLACE ±0.25 TWO PLACE ±0.13 ANGLES ±1°

THIRD ANGLE PROJECTION
DIMENSIONS IN ACCORDANCE WITH ASME Y14.5 - 2009

TI Automotive
630 COLUMBIA ST.
CARO, MI 48723
+1 989.673.7727

ENGINEER:	B.MIDDLETON	15-FEB-2012	MATERIAL/SPECIFICATION:
DESIGNER:	D.GILBERT	15-FEB-2012	
CAD SYSTEM:	PRO/E	SCALE: 1:1	SHEET NO. 1 OF 1
REFERENCE TO/REV.:	F90000267, HJPB9267AFF	3D PLM REFERENCE/REV.:	AR0031452/AG
REFERENCE TO/REV.:	000107670/AF	3D PLM REFERENCE/REV.:	AR0031453/AF
DRAWING NAME: FUEL PUMP OUTLINE			
SIZE:	A1	DRAWING NUMBER:	000107670