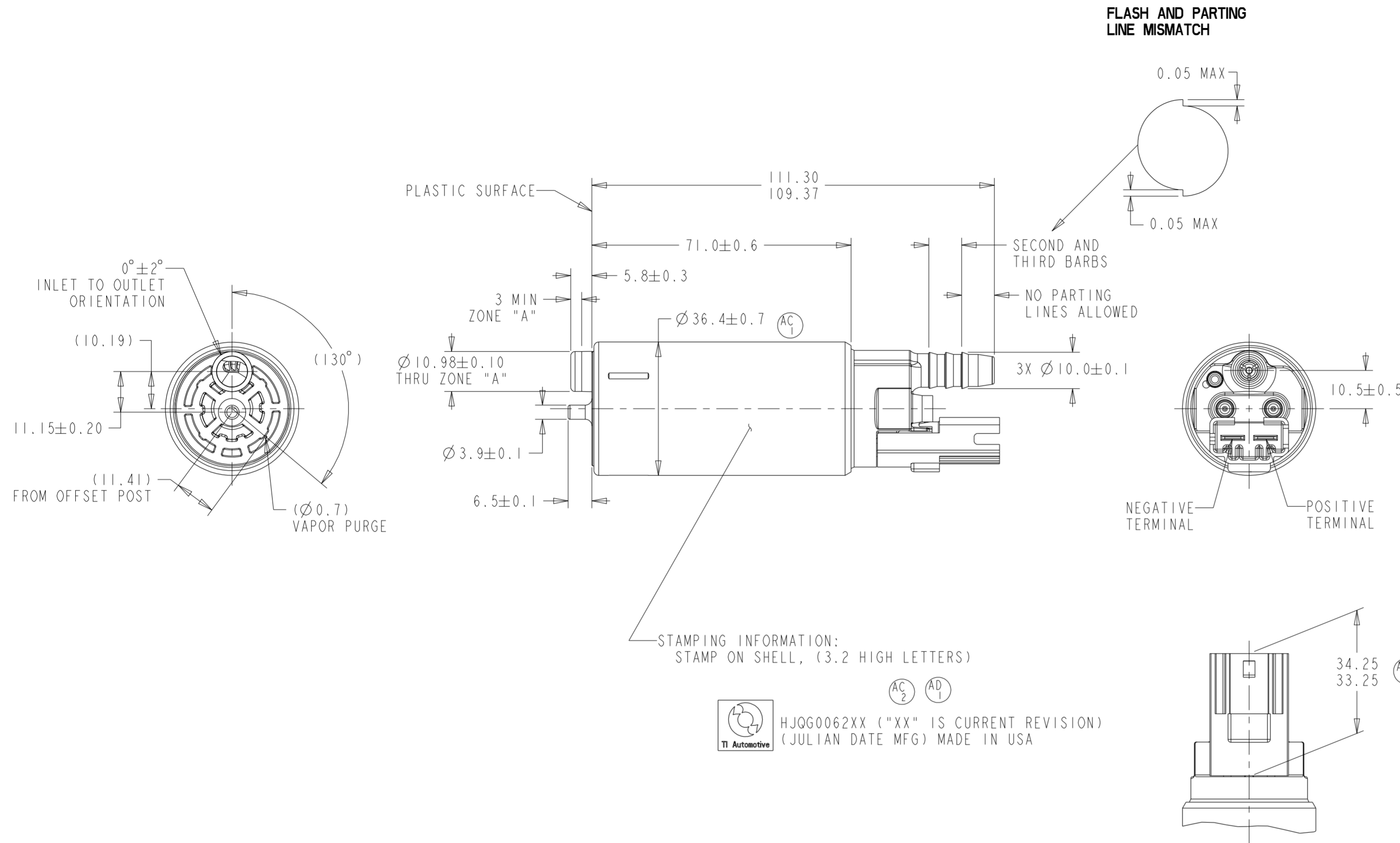


REVISIONS						
ZONE	LTR	DESCRIPTION	CHANGE No	DATE	BY	APPR'D
	AA	INITIAL RELEASE	DR87178	16SEP21	RMB	BLM
6-B	AB	AB1, 13.5V MAX AMPS 9.6 WAS 9.4 AB2, 12.0V MAX AMPS 8.8 WAS 8.6	PCRR82848	26JAN22	RMB	BLM
5-E		AC1 DBTC000302F00 MAGNETS WERE 1840034				
5-C	AC	AC2 UPDATED STAMPING INFO AC3 ADDED DIMENSION	C'13891	15NOV22	SLK	BLM
5-C	AD	AD1 UPDATED STAMPING INFO	83819	01JUN23	SLK	BLM



STAMPING INFORMATION:  
STAMP ON SHELL, (3.2 HIGH LETTERS)

AC2 AC1

HJQG0062XX ("XX" IS CURRENT REVISION)  
(JULIAN DATE MFG) MADE IN USA

PERFORMANCE CHART			
TEST FLUID: MS 142-66			
VOLTAGE	PRESSURE (kPa)	MIN. FLOW (LPH)	MAX. CURRENT DRAW (AMPS)
13.5	400	170	9.6
12.0	400	150	8.8
SHUT OFF PRESSURE AT 12.5 V: 1050 kPa MAX, 750 kPa MIN			

AB1

AB2

KEY PRODUCT CHARACTERISTICS				
REFER TO TI AUTOMOTIVE GLOBAL ADVANCED QUALITY PLANNING DOCUMENT CW-4-ALL-411 FOR THE CLASSIFICATION AND CONTROL OF KEY PRODUCT CHARACTERISTICS				
TYPE OF CHARACTERISTIC	SAFETY	REGULATORY	FUNCTION	FUNCTION PROCESS
NUMBER PER EACH CHARACTERISTIC	SC	SC	SC	SC
TOTAL NUMBER OF CHARACTERISTICS	1	1	1	1

- TI AUTOMOTIVE CONFIDENTIAL AND PROPRIETARY -  
THIS DRAWING IS PROPERTY OF TI AUTOMOTIVE. TI AUTOMOTIVE CLAIMS PROPRIETARY RIGHTS IN THE SUBJECT MATTER SHOWN AND DESCRIBED ON THIS DRAWING AND RETAINS ALL INTELLECTUAL PROPERTY RIGHTS. THE DRAWING IS PROVIDED FOR REFERENCE PURPOSES ONLY AND ON THE EXPRESS CONDITION THAT IT WILL BE HELD IN CONFIDENCE. THIS DRAWING SHALL NOT BE DISCLOSED TO OTHERS OR USED FOR THE PURPOSE OF MANUFACTURE BY OR PROCUREMENT FROM OTHERS OF THE ARTICLE OR PART SHOWN WITHOUT TI AUTOMOTIVE'S EXPRESS WRITTEN CONSENT. NO LICENSE OR OTHER RIGHT IS GIVEN OR IMPLIED BY THE PROVISION OF THIS DRAWING TO RECIPIENT.  
COPYRIGHT, TI AUTOMOTIVE 2018. ALL RIGHTS RESERVED.

METRIC  
ALL DIMENSIONS ARE IN MILLIMETERS

DO NOT SCALE  
DECIMAL TOLERANCES UNLESS OTHERWISE SPECIFIED  
ONE PLACE ±0.25 TWO PLACE ±0.13 ANGLES ±1°

THIRD ANGLE PROJECTION  
DIMENSIONS IN ACCORDANCE WITH ASME Y14.5 - 2009

**TI Automotive**

630 COLUMBIA ST.  
CARO, MI 48723  
+1 989.673.7727

ENGINEER:	B.MIDDLETON	15-SEP-2021	MATERIAL/SPECIFICATION:
DESIGNER:	R.BRUBAKER	15-SEP-2021	
CAD SYSTEM: PRO/E	SCALE: 1:1	SHEET NO.   OF	
REFERENCE ID/REV.:	HJQC0062AB	2D PLM REFERENCE/REV.: AR0061683/AD	
REFERENCE ID/REV.:	000130617/AB	3D PLM REFERENCE/REV.: AR0060770/AC	
DRAWING NAME: FUEL PUMP OUTLINE (TI.9HF)			
SIZE:	A2	DRAWING NUMBER:	HJQG0062