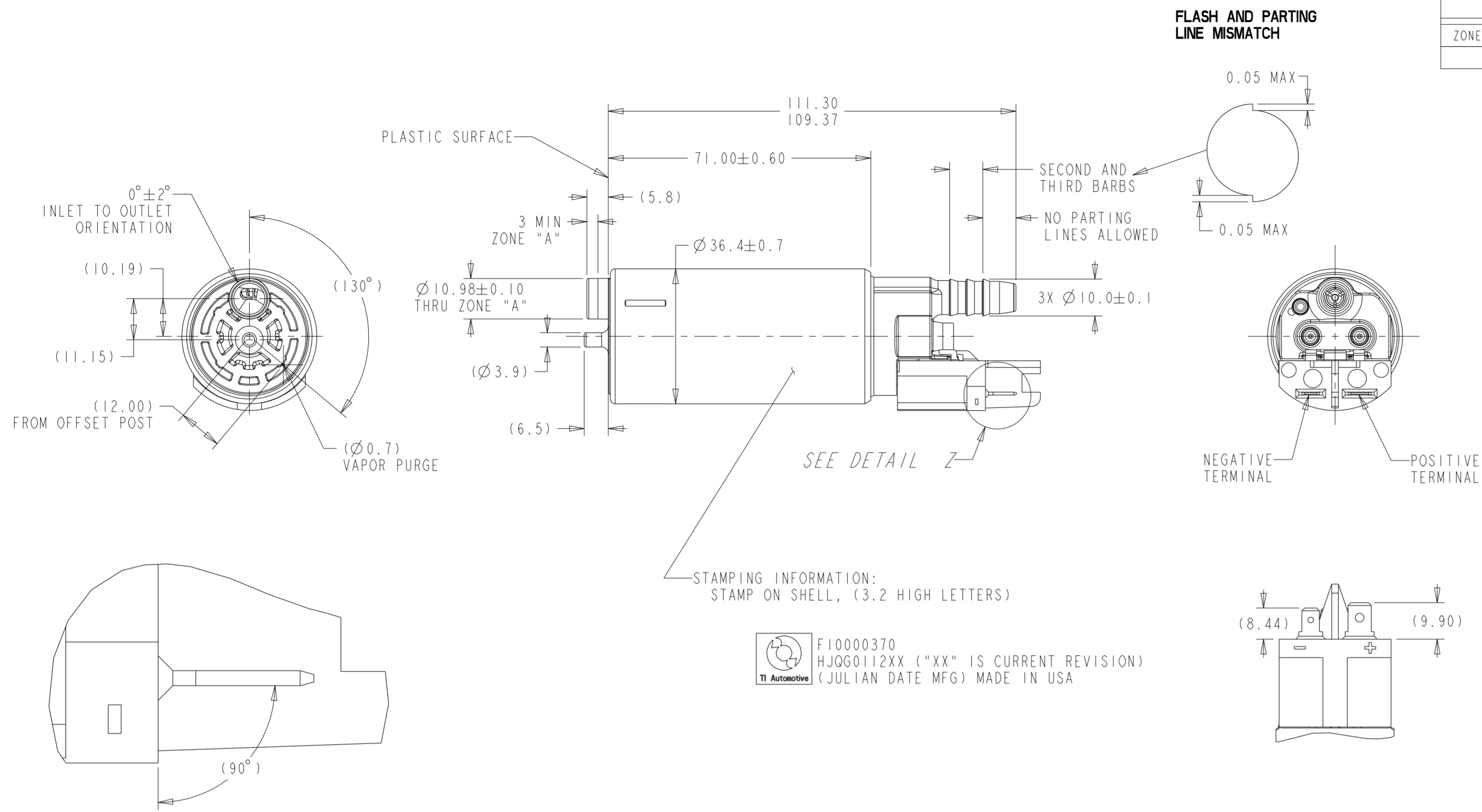
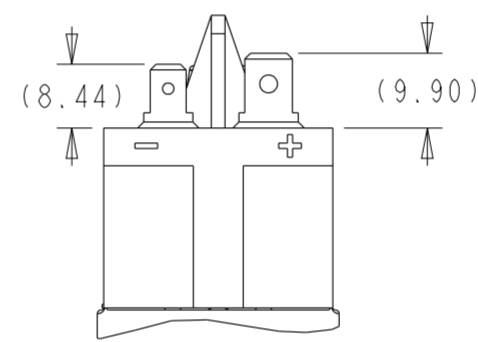


REVISIONS

| ZONE | LTR | DESCRIPTION     | CHANGE No | DATE    | BY  | APPR'D |
|------|-----|-----------------|-----------|---------|-----|--------|
|      | AA  | INITIAL RELEASE | DR95691   | 15MAY23 | JTK | BLM    |



TI Automotive F10000370  
HJQG0112XX ("XX" IS CURRENT REVISION)  
(JULIAN DATE MFG) MADE IN USA



DETAIL Z  
SCALE 5:1  
(BOTH BLADES)

NOTES:

- PUMP SHALL BE SUITABLY PACKAGED TO PREVENT CONTAMINATION WITH FOREIGN MATERIAL.
- CUSTOMER MUST FOLLOW TI AUTOMOTIVE SPECIFICATION S-448 WHEN HANDLING THIS PUMP.
- TERMINAL BLADES DESIGNED TO SAE J858a TYPE 1B EXCEPT FOR DIMENSION G (THICKNESS) WHICH IS 0.81.
- MINIMUM RECOMMENDED WIRE GAGE: 14.
- MODEL: TI.9

KEY PRODUCT CHARACTERISTICS

REFER TO TI AUTOMOTIVE GLOBAL ADVANCED QUALITY PLANNING DOCUMENT CW-4-ALL-411 FOR THE CLASSIFICATION AND CONTROL OF KEY PRODUCT CHARACTERISTICS

| TYPE OF CHARACTERISTIC          | SAFETY | REGULATORY | FUNCTION | FUNCTION PROCESS |
|---------------------------------|--------|------------|----------|------------------|
| NUMBER PER EACH CHARACTERISTIC  | 1      | 1          | 1        | 1                |
| TOTAL NUMBER OF CHARACTERISTICS | 1      | 1          | 1        | 1                |

TI AUTOMOTIVE CONFIDENTIAL AND PROPRIETARY - THIS DRAWING IS PROPERTY OF TI AUTOMOTIVE. TI AUTOMOTIVE CLAIMS PROPRIETARY RIGHTS IN THE SUBJECT MATTER SHOWN AND DESCRIBED ON THIS DRAWING AND RETAINS ALL INTELLECTUAL PROPERTY RIGHTS. THE DRAWING IS PROVIDED FOR REFERENCE PURPOSES ONLY AND ON THE EXPRESS CONDITION THAT IT WILL BE HELD IN CONFIDENCE. THIS DRAWING SHALL NOT BE DISCLOSED TO OTHERS OR USED FOR THE PURPOSE OF MANUFACTURE BY OR PROCUREMENT FROM OTHERS OF THE ARTICLE OR PART SHOWN WITHOUT TI AUTOMOTIVE'S EXPRESS WRITTEN CONSENT. NO LICENSE OR OTHER RIGHT IS GIVEN OR IMPLIED BY THE PROVISION OF THIS DRAWING TO RECIPIENT.  
COPYRIGHT, TI AUTOMOTIVE 2018. ALL RIGHTS RESERVED.

METRIC  
ALL DIMENSIONS ARE IN MILLIMETERS

DO NOT SCALE  
DECIMAL TOLERANCES UNLESS OTHERWISE SPECIFIED  
ONE PLACE ±0.25 TWO PLACE ±0.13 ANGLES ±1°

THIRD ANGLE PROJECTION  
DIMENSIONS IN ACCORDANCE WITH ASME Y14.5 - 2009

630 COLUMBIA ST.  
CARO, MI 48723  
+1 989.673.7727

**TI Automotive**

|                                    |              |                                     |                         |           |
|------------------------------------|--------------|-------------------------------------|-------------------------|-----------|
| ENGINEER:                          | B.MIDDLETON  | 18MAY23                             | MATERIAL/SPECIFICATION: | SEE NOTES |
| DESIGNER:                          | J.KULIGOWSKI | 18MAY23                             |                         |           |
| CAD SYSTEM: PRO/E                  | SCALE: 1:1   | SHEET NO.   OF                      |                         |           |
| REFERENCE ID/REV.:                 | HJQG0112     | 2D PLM REFERENCE/REV.: AR3105388/AA |                         |           |
| REFERENCE ID/REV.:                 | 300114800/AA | 3D PLM REFERENCE/REV.: AR3105386/AA |                         |           |
| DRAWING NAME:<br>FUEL PUMP OUTLINE |              |                                     |                         |           |
| SIZE:                              | A2           | DRAWING NUMBER:<br>F10000370        |                         |           |