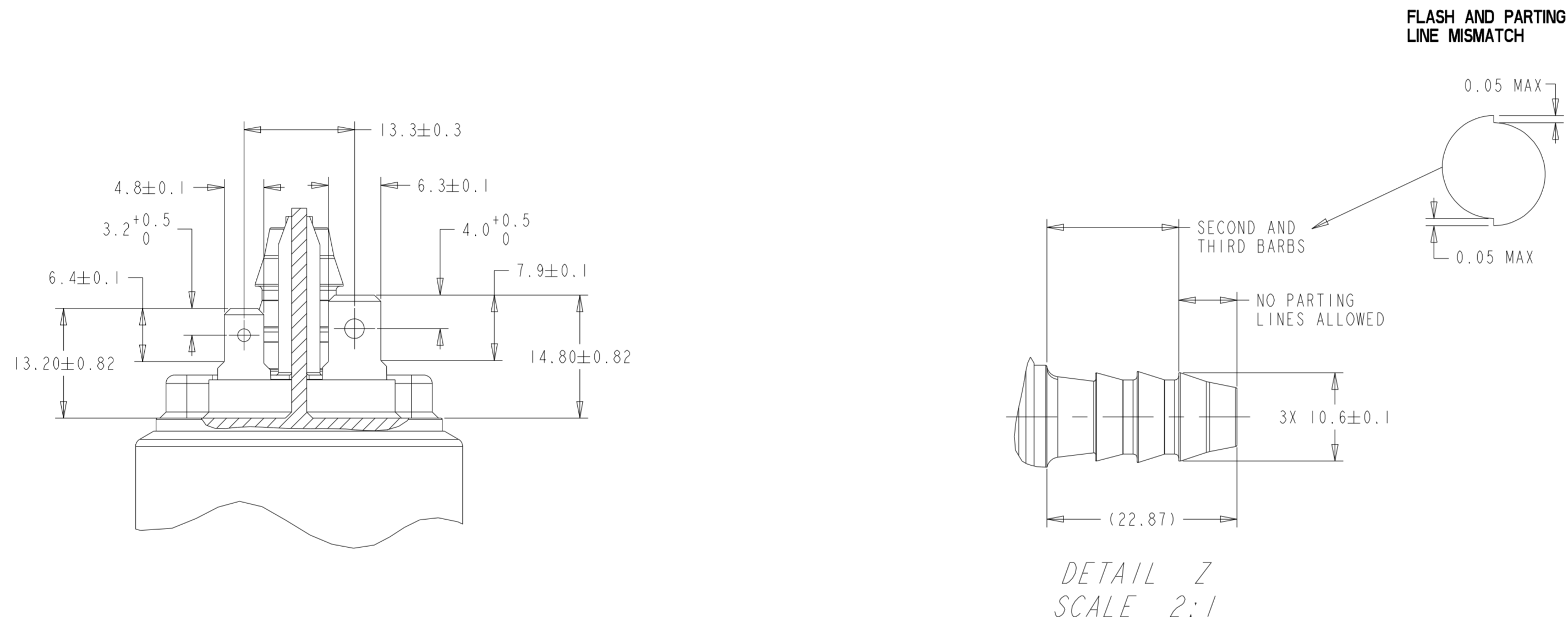
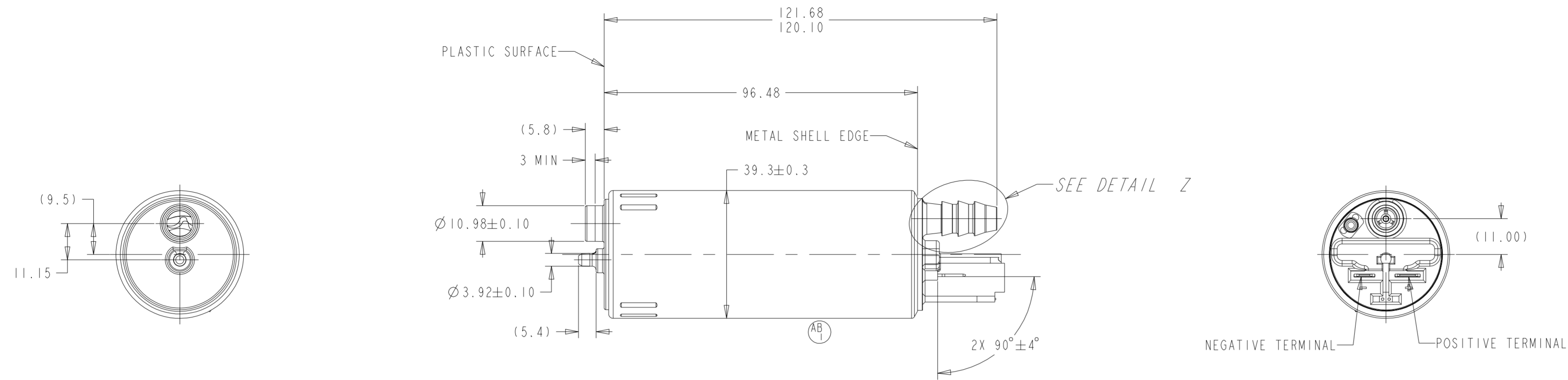


REVISIONS						
ZONE	LTR	DESCRIPTION	CHANGE No	DATE	BY	APPR'D
	AA	INITIAL RELEASE	C'4289	16JUN17	SLK	BLM
7-F	AB	ABI DBTC0044 MAGNETS WERE 1840044	83647	13MAR23	JTK	MLM

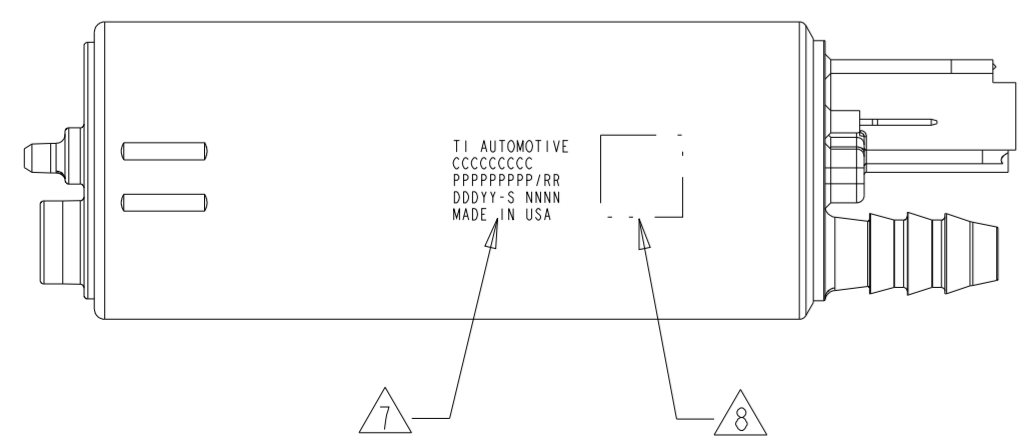


PERFORMANCE CHART			
TEST FLUID: STODDARD SOLVENT TYPE II SPEC. GRADE 0.79			
VOLTAGE	PRESSURE (kPa)	MIN. FLOW (LPH)	MAX. CURRENT DRAW (AMPS)
12.0	530	129	13.8
SHUT OFF PRESSURE AT 13.8 V: 1050 kPa MAX, 700 kPa MIN			
REVERSE LEAKAGE WITH 103.4 kPa AIR: 6 cc/MINUTE MAX			

NOTES:

- PUMP WILL BE PACKAGED TO PREVENT CONTAMINATION BY FOREIGN MATERIAL.
- TERMINAL BLADES DESIGNED TO SAE J858a TYPE 1B, WITH AN EXCEPTION TO DIM G (THICKNESS IS 0.81 NOT 0.50) FOR THE NEGATIVE TERMINAL.
- MODEL E2GGD 39, DIESEL HIGH DISPLACEMENT.
- PUMP TO BE EVACUATED OF TEST FLUID PRIOR TO INTALLATION OF SHIPPING CAPS.
- INLET FILTER REQUIREMENT:
- MINIMUM RECOMMENDED WIRE GAGE: 12

- ⚠ LASER ETCH INFO:
TI AUTOMOTIVE
CCCCCCCC = CUSTOMER PART NUMBER (IF REQUIRED)
PPPPPPPP = TI AUTOMOTIVE PART NUMBER, RR = TI AUTOMOTIVE PART REV
DDD = JULIAN DATE, YY = YEAR, S = SHIFT, NNNN = SERIAL NUMBER
MADE IN USA
- ⚠ DATA MATRIX CODE = PART NUMBER, JULIAN DATE-SHIFT-SERIAL NUMBER (EX: 000118908XX-1-2222)



KEY PRODUCT CHARACTERISTICS				
REFER TO TI AUTOMOTIVE GLOBAL ADVANCED QUALITY PLANNING DOCUMENT CW-4-ALL-411 FOR THE CLASSIFICATION AND CONTROL OF KEY PRODUCT CHARACTERISTICS				
TYPE OF CHARACTERISTIC	SAFETY	REGULATORY	FUNCTION	FUNCTION PROCESS
NUMBER PER EACH CHARACTERISTIC	--	--	--	--
TOTAL NUMBER OF CHARACTERISTICS	--	--	--	--

THIS DRAWING IS PROPERTY OF TI AUTOMOTIVE. TI AUTOMOTIVE CLAIMS PROPRIETARY RIGHTS IN THE SUBJECT MATTER SHOWN AND DESCRIBED ON THIS DRAWING AND RETAINS ALL INTELLECTUAL PROPERTY RIGHTS. THE DRAWING IS PROVIDED FOR REFERENCE PURPOSES ONLY AND ON THE EXPRESS CONDITION THAT IT WILL BE HELD IN CONFIDENCE. THIS DRAWING SHALL NOT BE DISCLOSED TO OTHERS OR USED FOR THE PURPOSE OF MANUFACTURE OR PROCUREMENT FROM OTHERS OF THE ARTICLE OR PART SHOWN WITHOUT TI AUTOMOTIVE'S EXPRESS WRITTEN CONSENT. NO LICENSE OR OTHER RIGHT IS GIVEN OR IMPLIED BY THE PROVISION OF THIS DRAWING TO RECIPIENT.
COPYRIGHT, TI AUTOMOTIVE 2018. ALL RIGHTS RESERVED.

METRIC
ALL DIMENSIONS ARE IN MILLIMETERS

DO NOT SCALE
DECIMAL TOLERANCES UNLESS OTHERWISE SPECIFIED
ONE PLACE ±0.25 TWO PLACE ±0.13 ANGLES ±1°

THIRD ANGLE PROJECTION
DIMENSIONS IN ACCORDANCE WITH ASME Y14.5 - 2009

TI Automotive
630 COLUMBIA ST.
CARO, MI 48723
+1 989.673.7727

ENGINEER:	B.MIDDLETON	16JUN2017	MATERIAL/SPECIFICATION:
DESIGNER:	S.KADY	16JUN2017	SEE NOTES
CAD SYSTEM: PRO/E	SCALE: 1:1	SHEET NO. 1 OF 1	
REFERENCE TO REV.: HJPU0016	3D PLM REFERENCE REV.: AR0046282/AB		
REFERENCE TO REV.: 000118908/AB	3D PLM REFERENCE REV.: AR0046281/AB		
DRAWING NAME: FUEL PUMP OUTLINE			
SIZE: A1	DRAWING NUMBER: 000118908		